

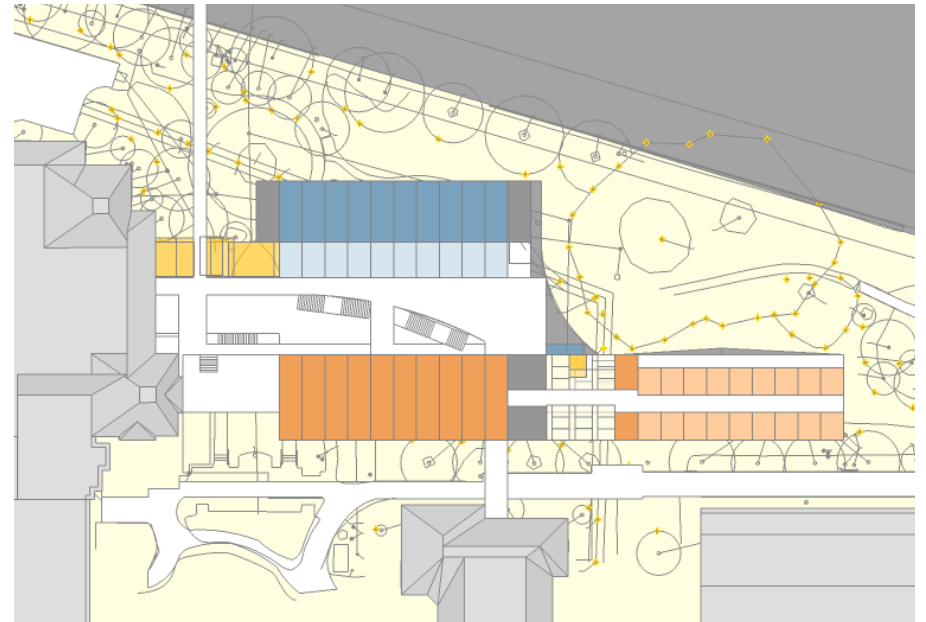
Agenda

- Introductions
- Discussion: Cost and Value strategies
- Study and discuss design strategies including structural and mechanical approach
- Lab Module and Layout Update
- Discuss module dimensions, columns and vibration
- Establish building options for further development
- Study and discuss site design strategies
- Establish site design options for further development

Cost and Value strategies



Option A "Offices West"



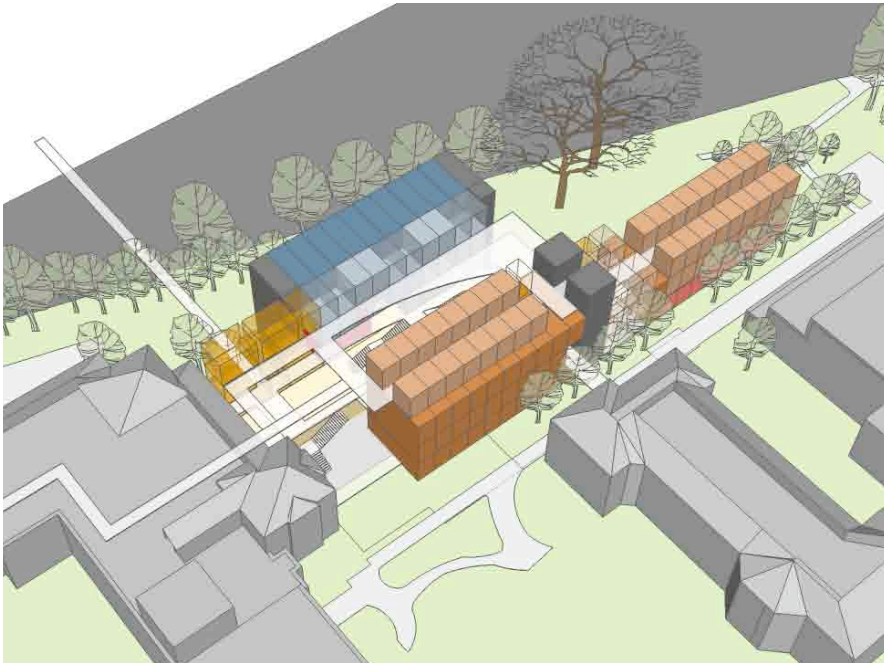
Option B "Dry Labs West"



Option C "Sandwich"



Option A "Offices West"

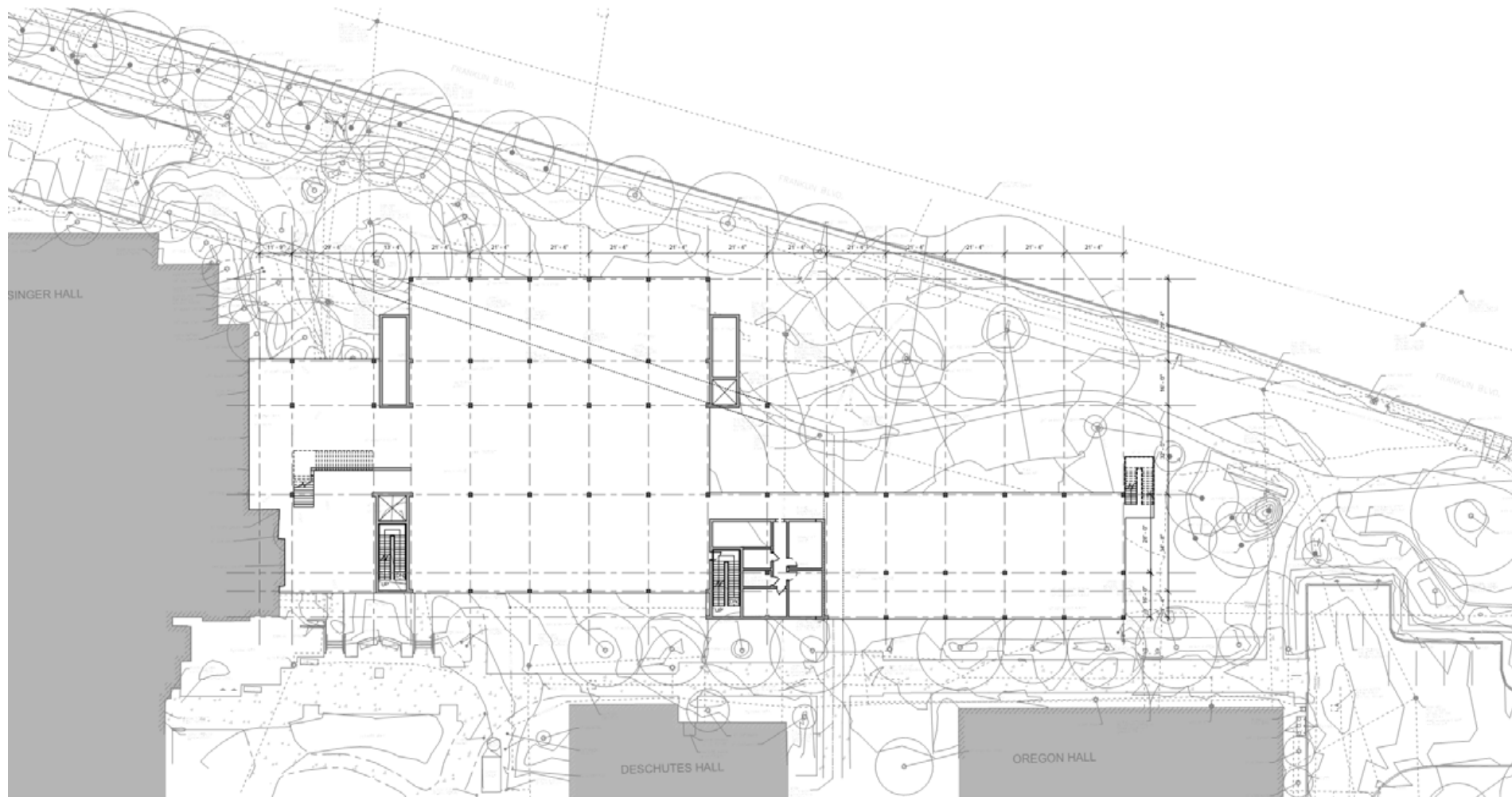


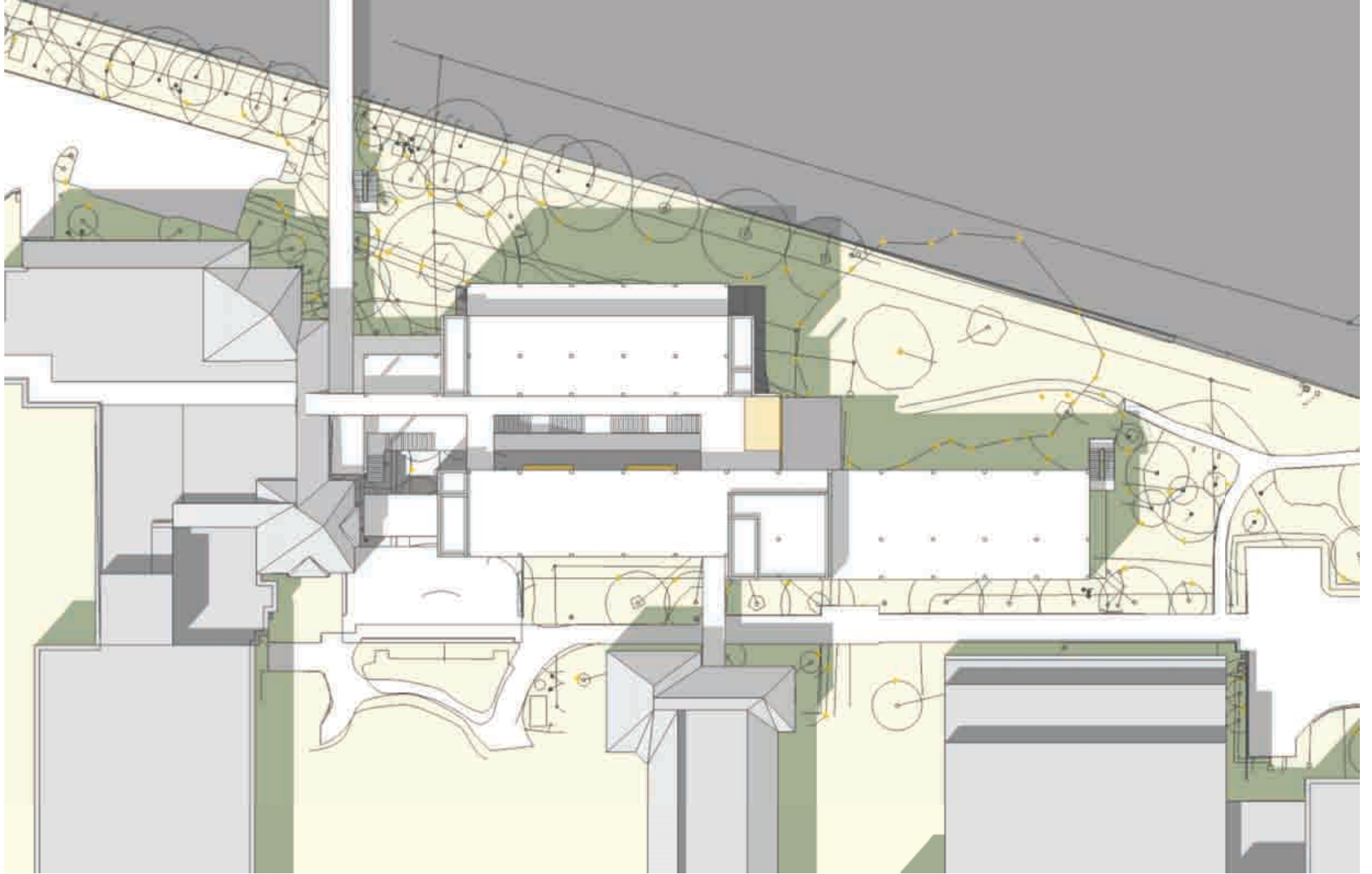
Option B "Dry Labs West"



Option C "Sandwich"

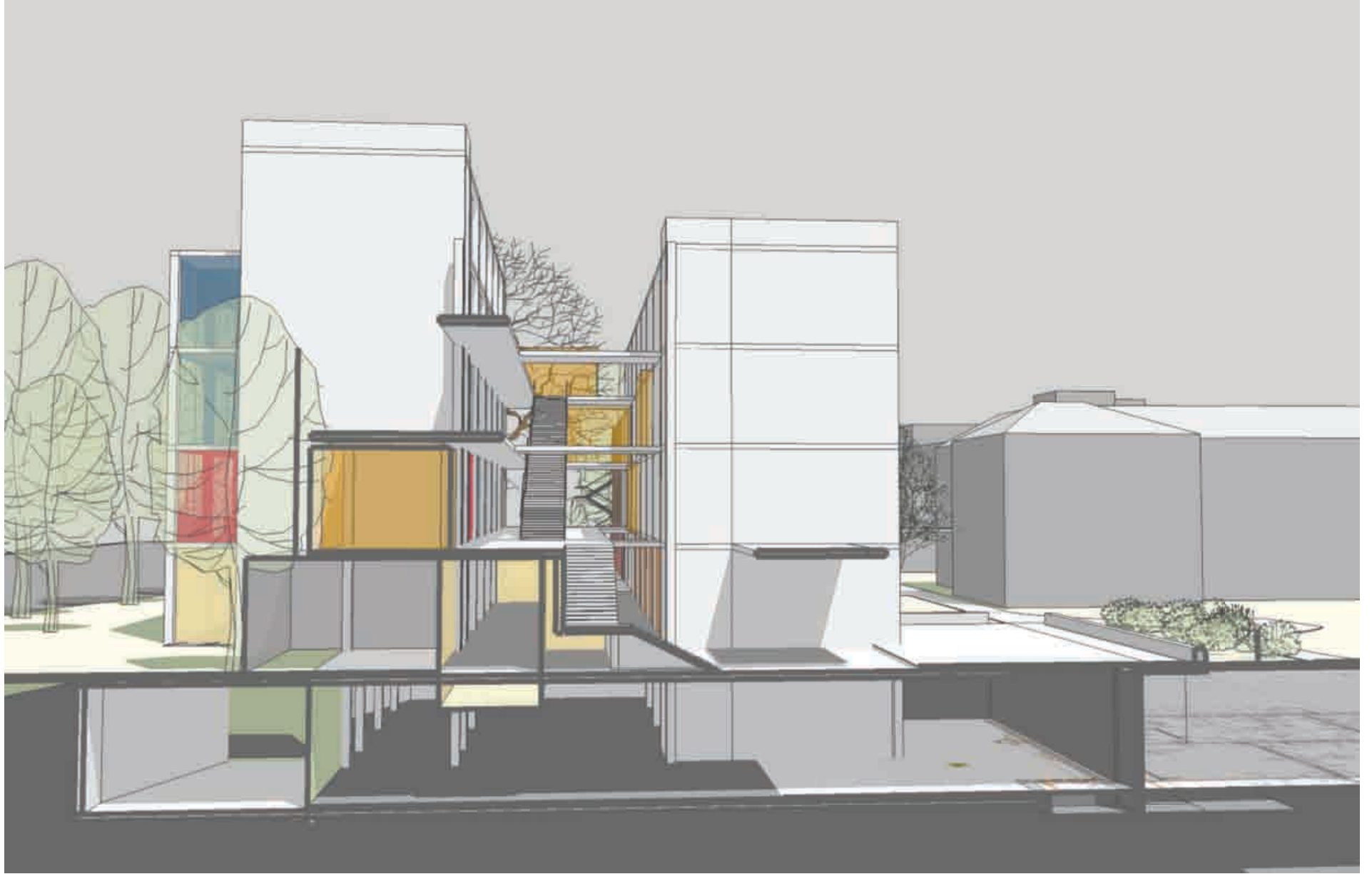
Design Update





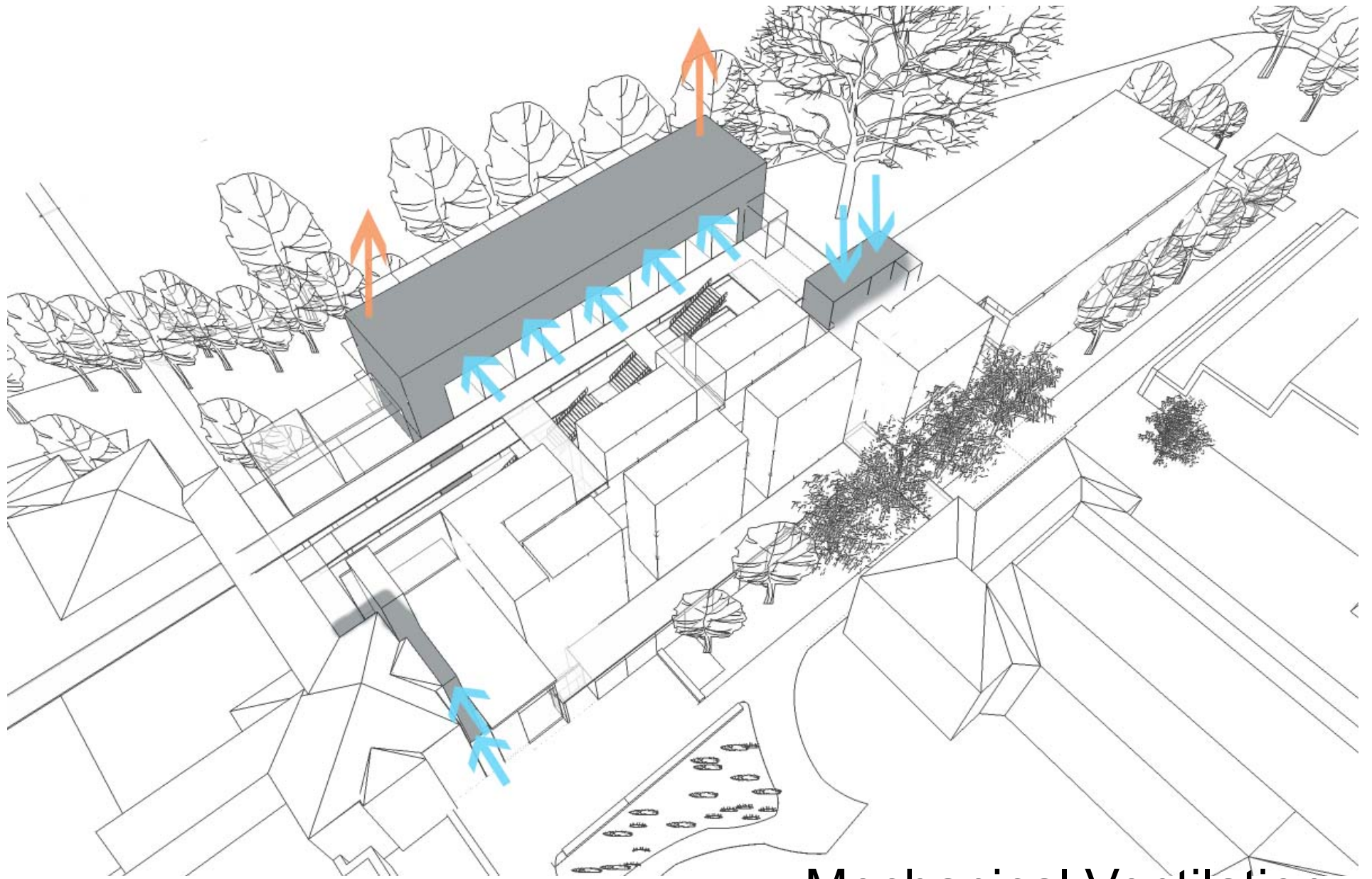




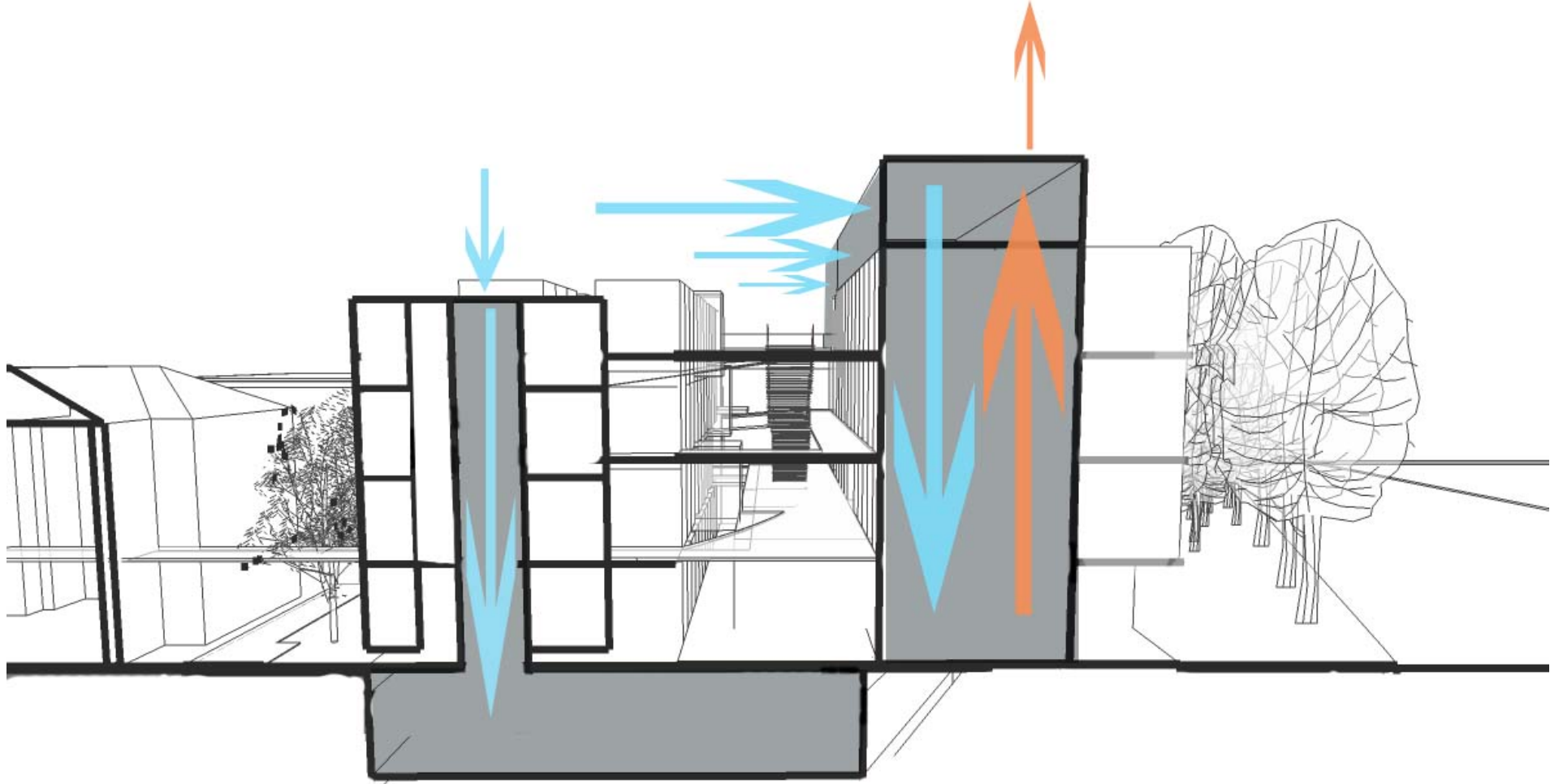




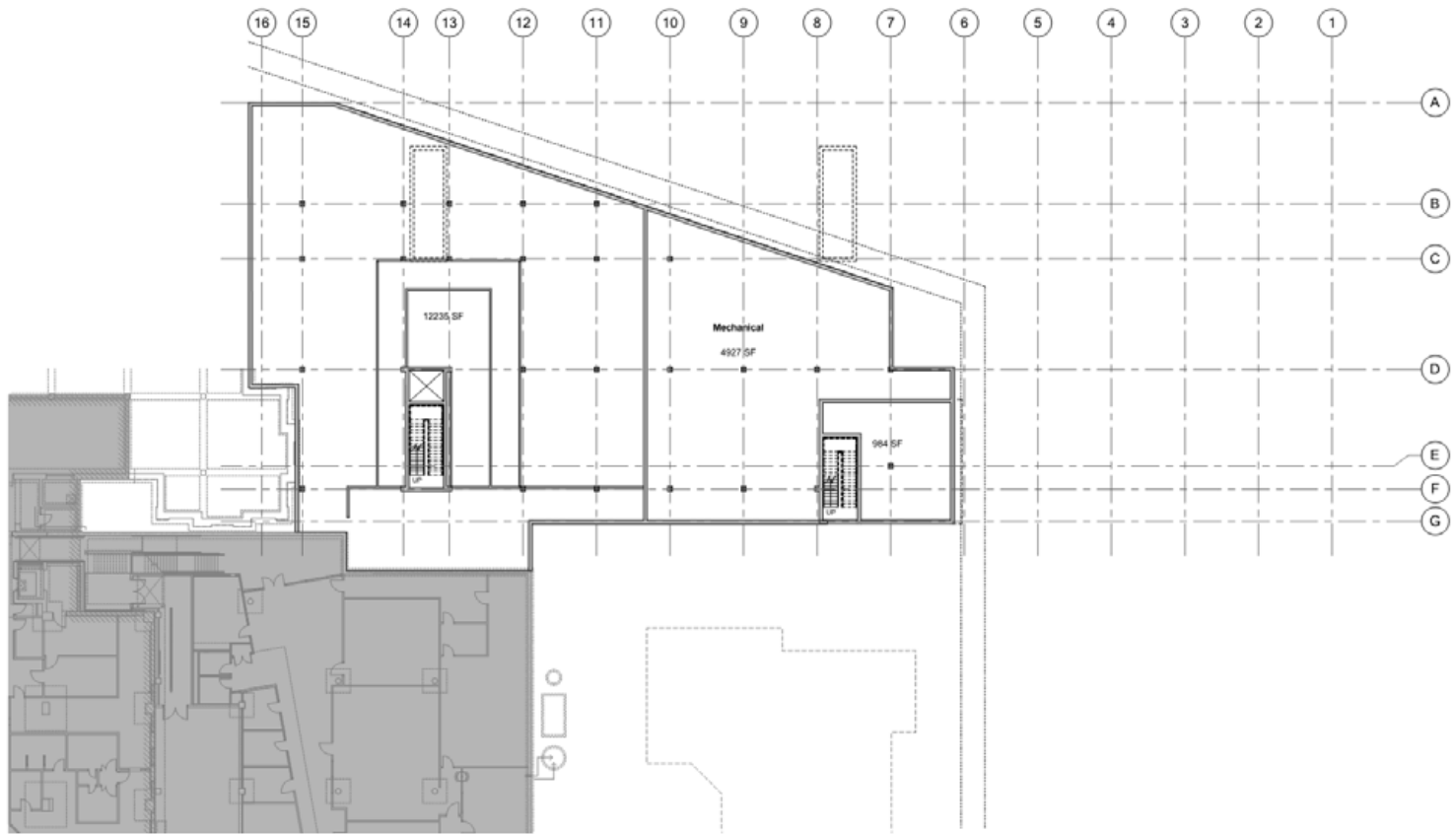




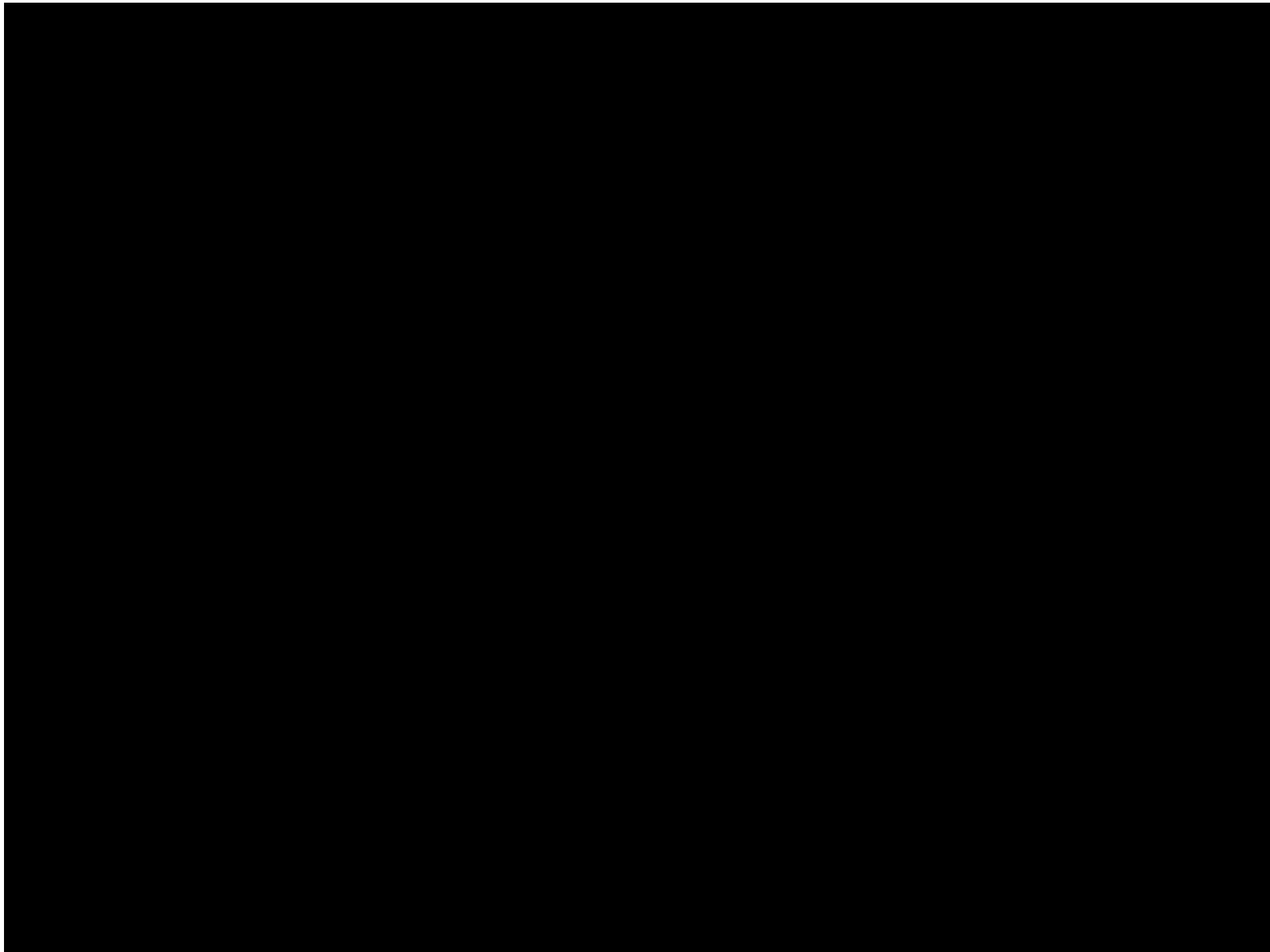
Mechanical Ventilation



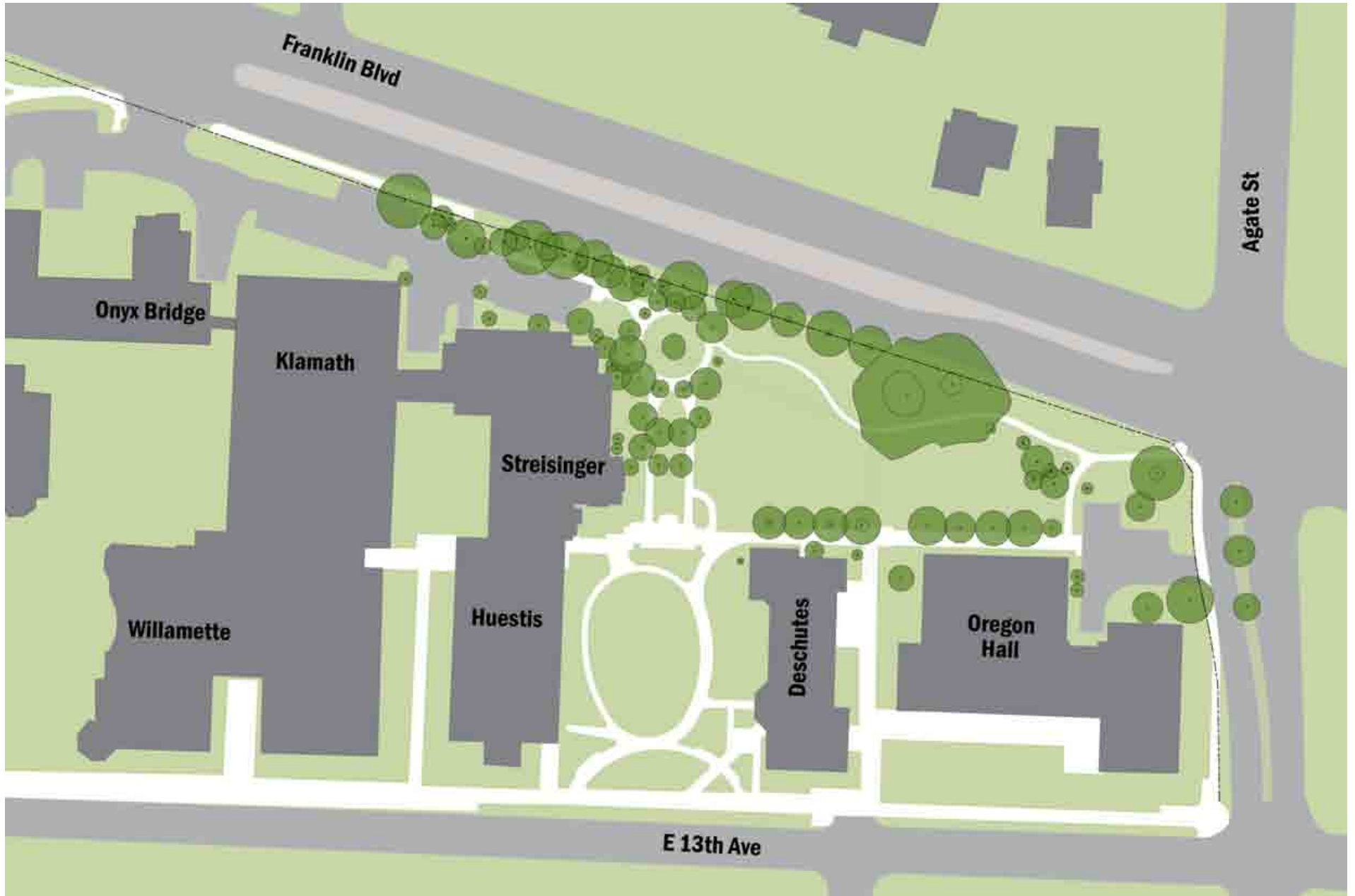
Mechanical Ventilation



Lab Planning Update



Site Design



Existing Conditions



Service Access



Franklin Frontage

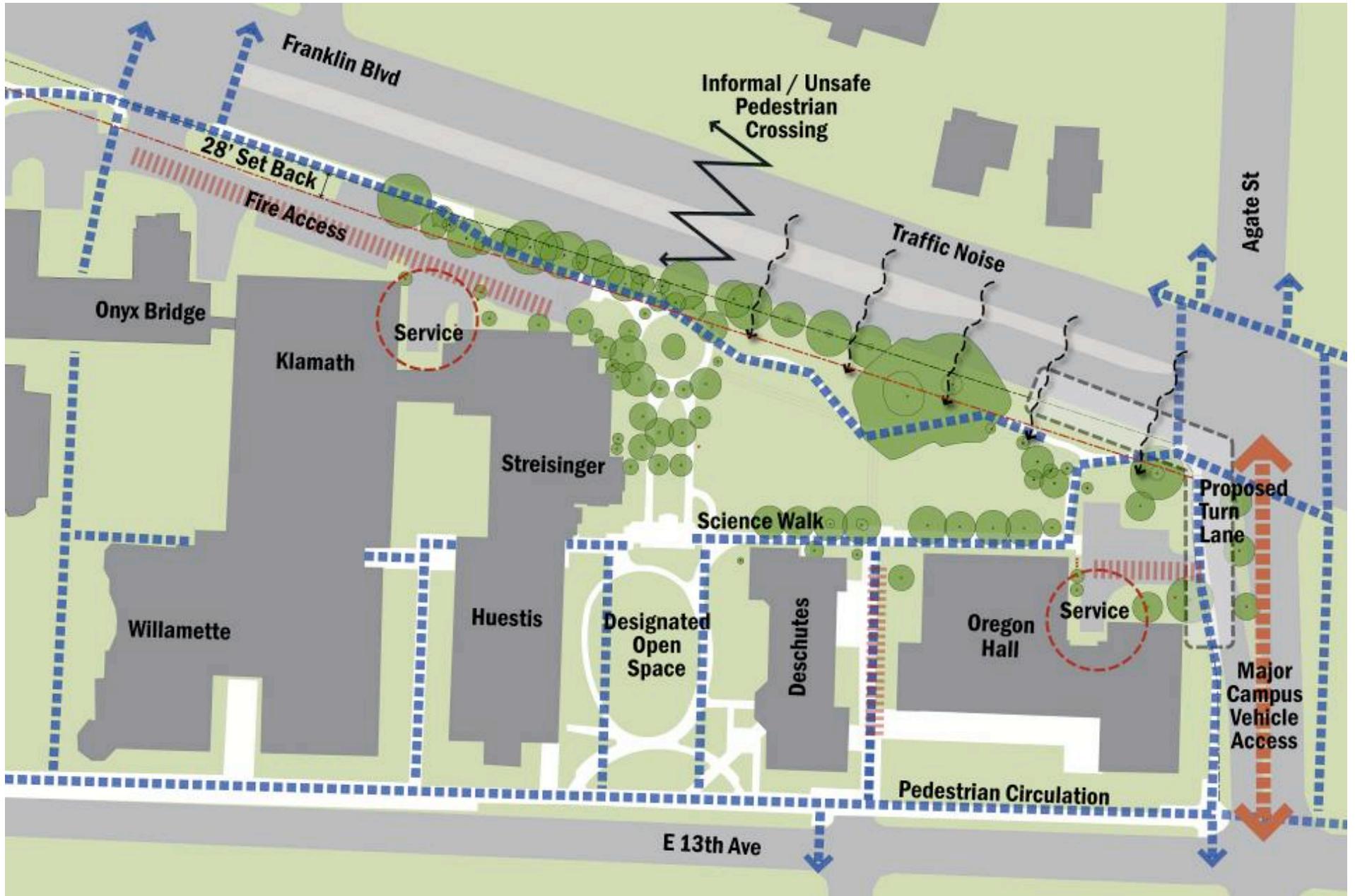


E 13th Ave Grand Oaks

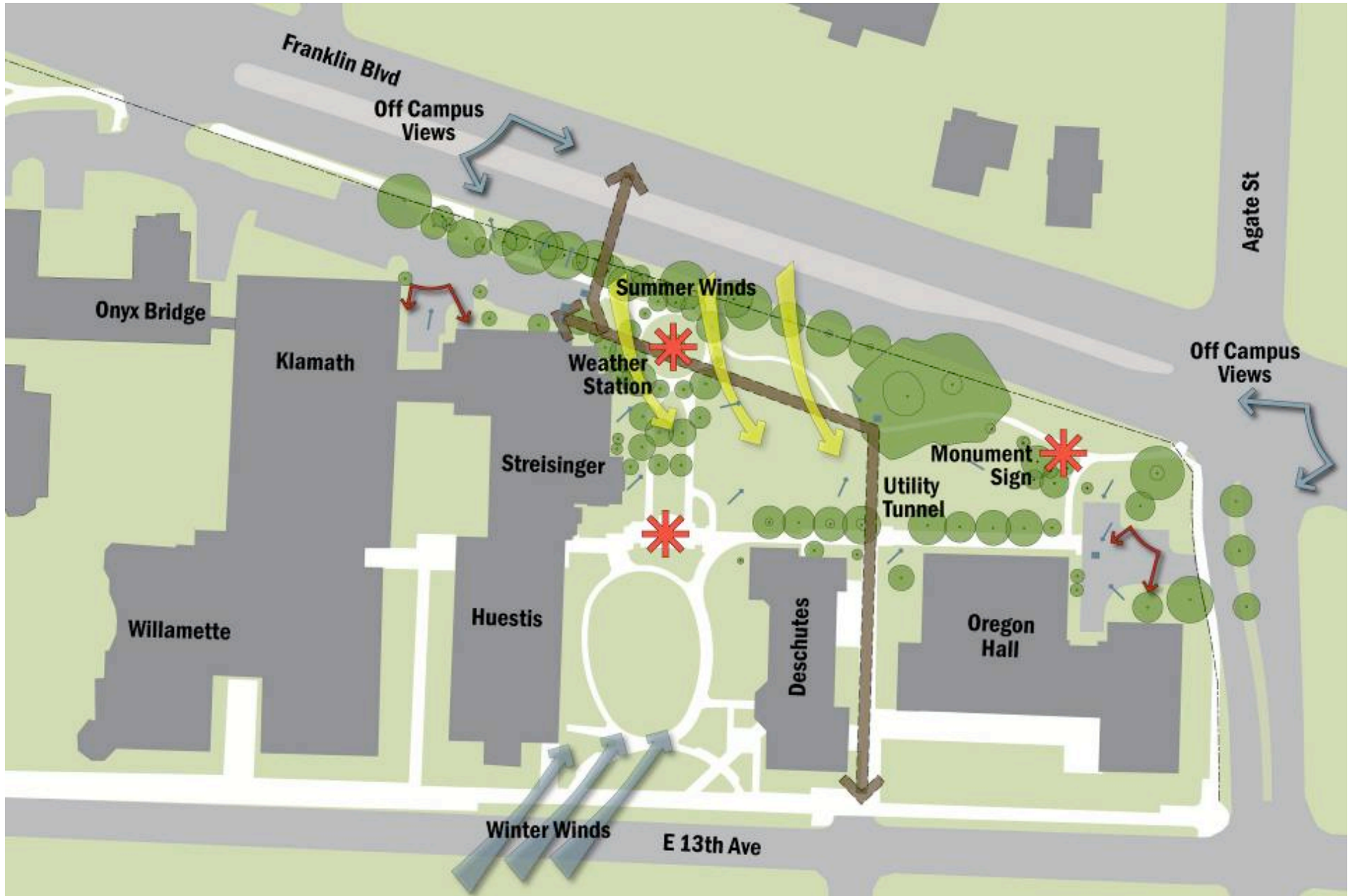


Agate Entrance Green

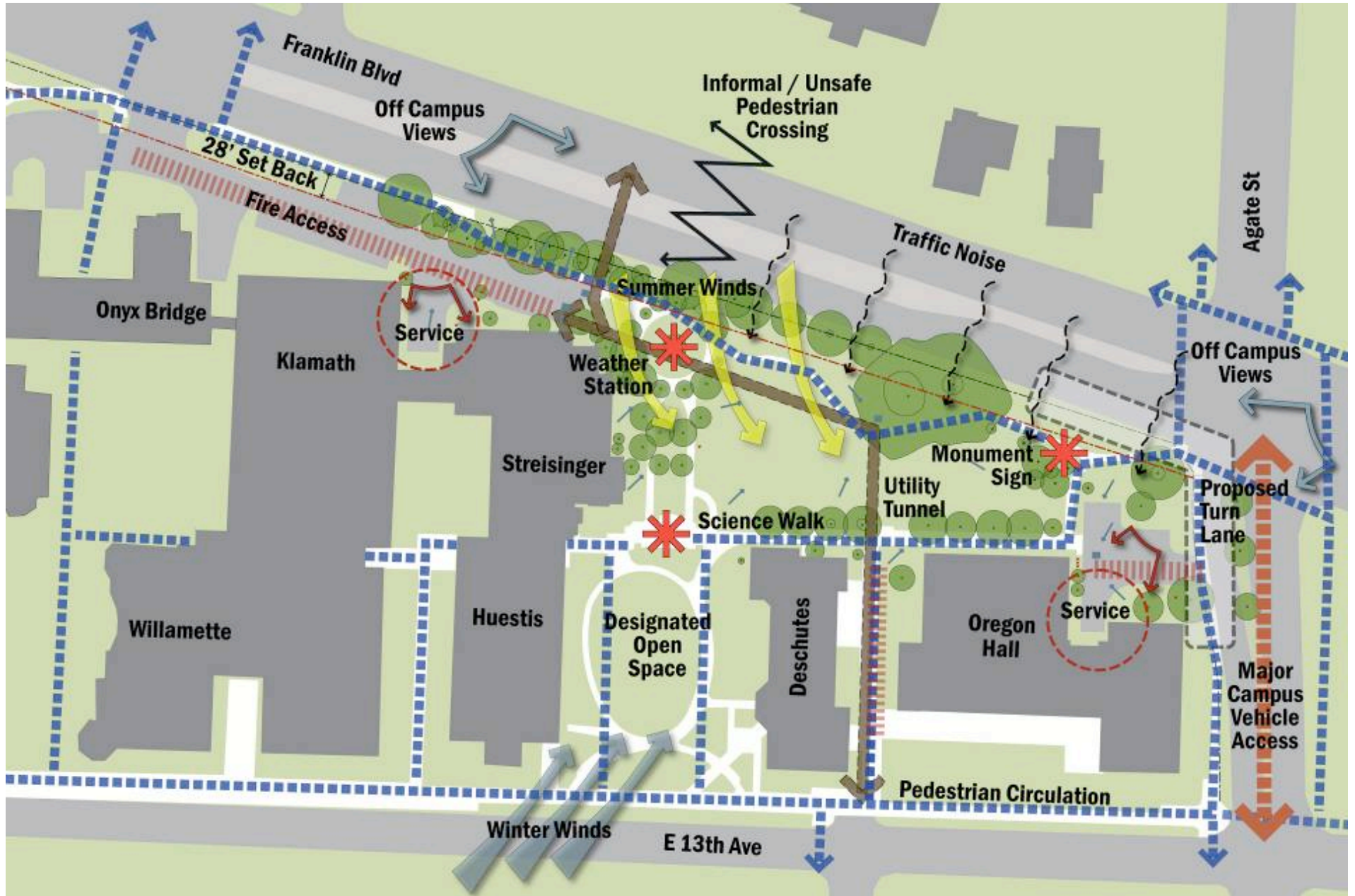
Existing Conditions



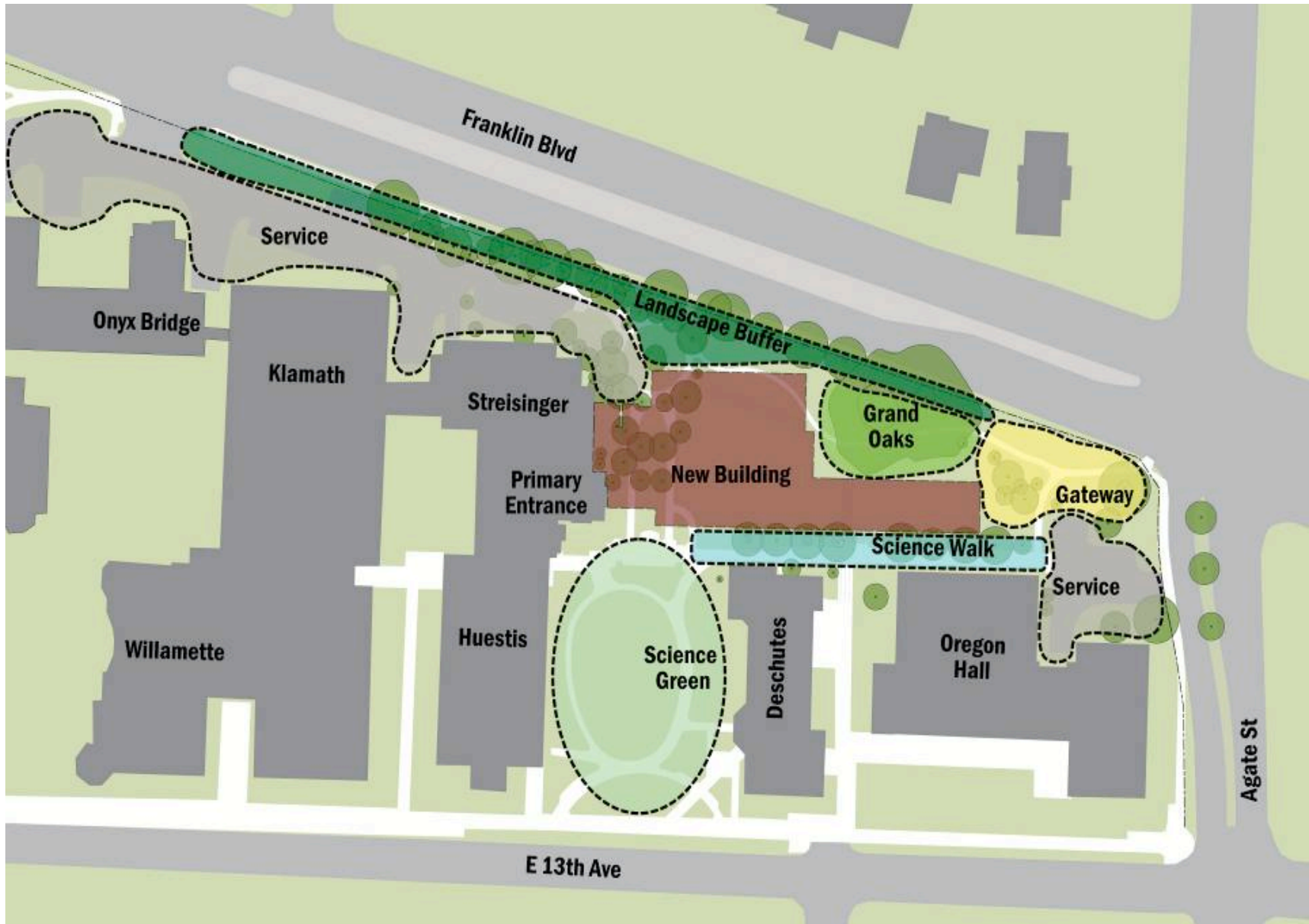
Site Analysis – Circulation & Access



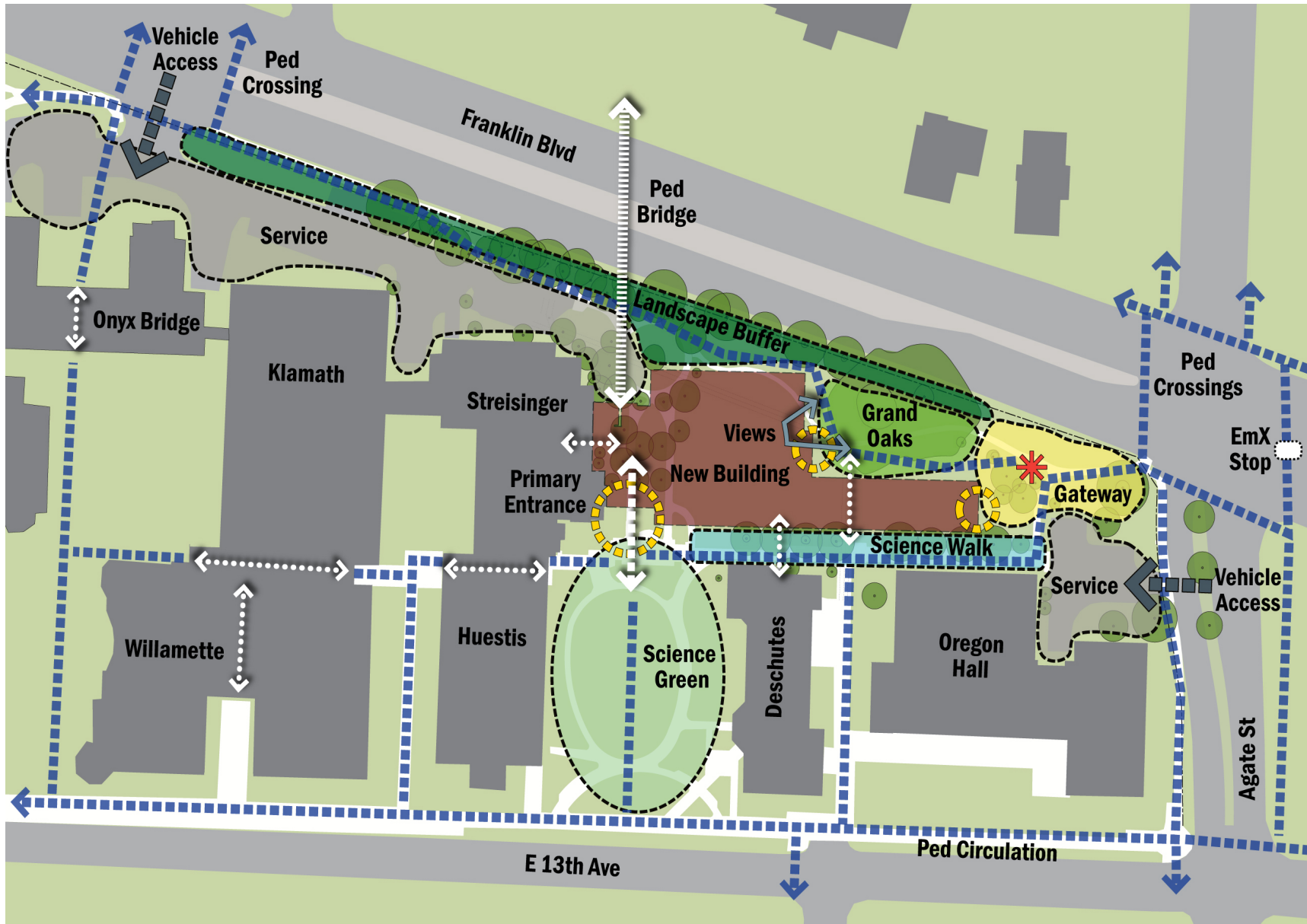
Site Analysis – Natural & Site Features



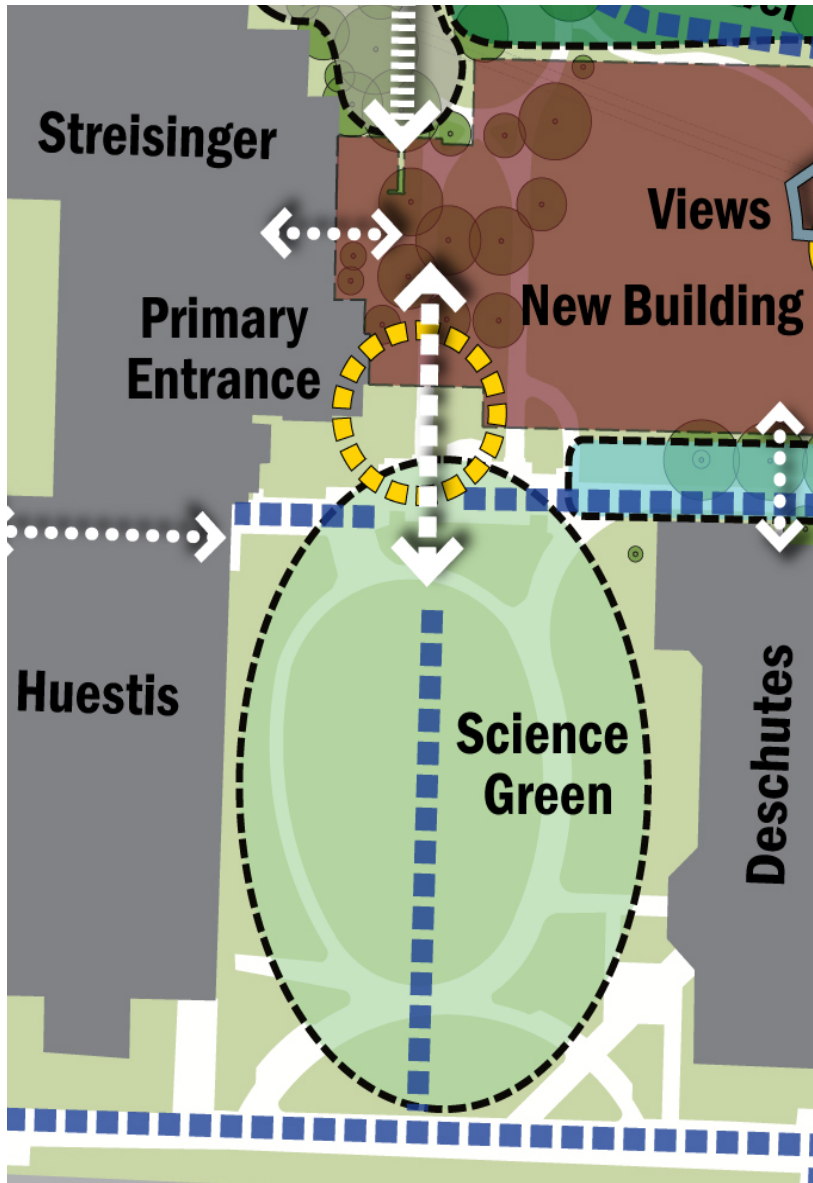
Site Analysis - Composite



Planning Concepts – Plan Areas

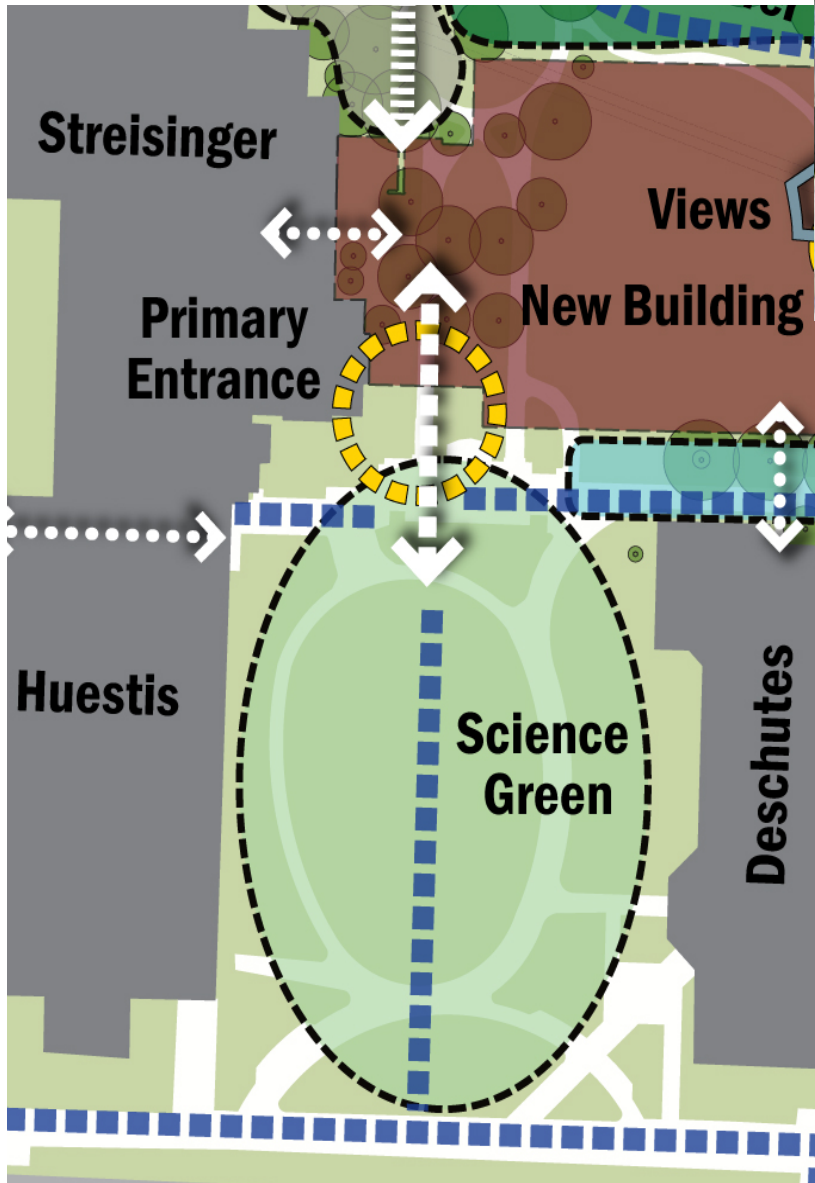


Planning Concepts – Circulation, Access & Features

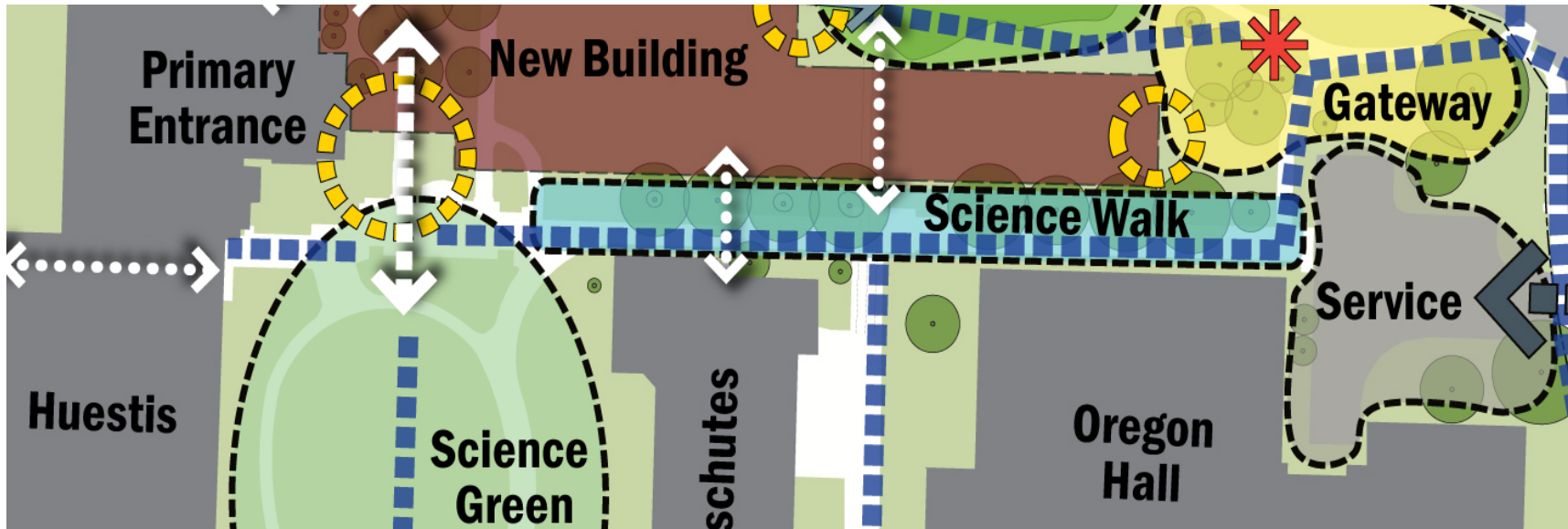


- Main entrance into new building from Science Green
- Hub of pedestrian routes
 - East-west connections: Science Walk and extension, Streisinger & Huestis buildings
 - North-south connections: Science Green, tie to 13th Ave axis, landing of pedestrian bridge across Franklin Blvd

Primary Entrance from Science Green

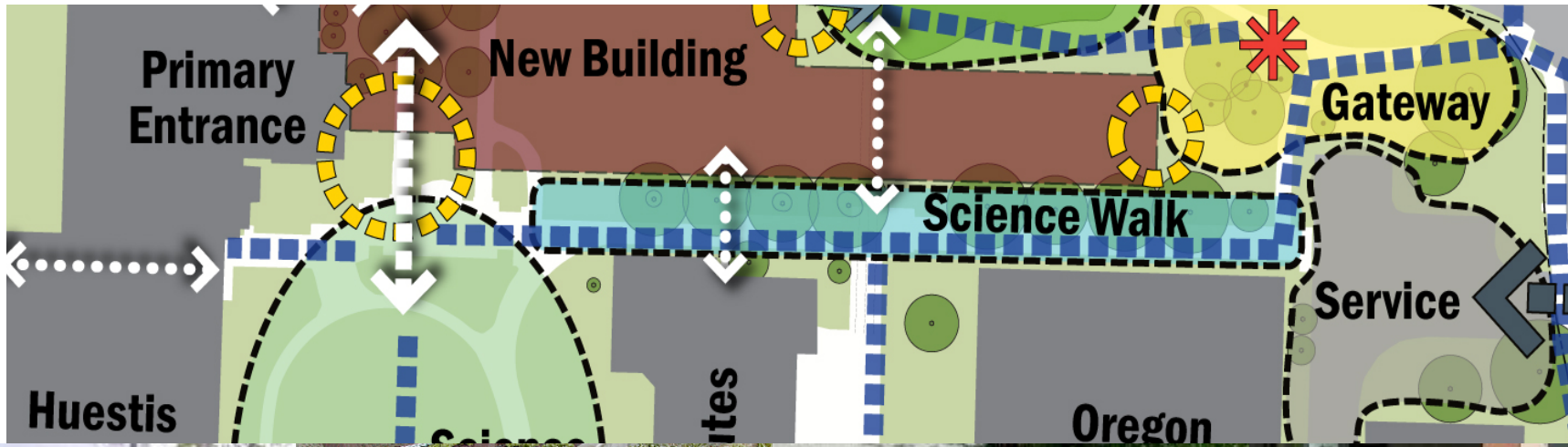


Primary Entrance from Science Green

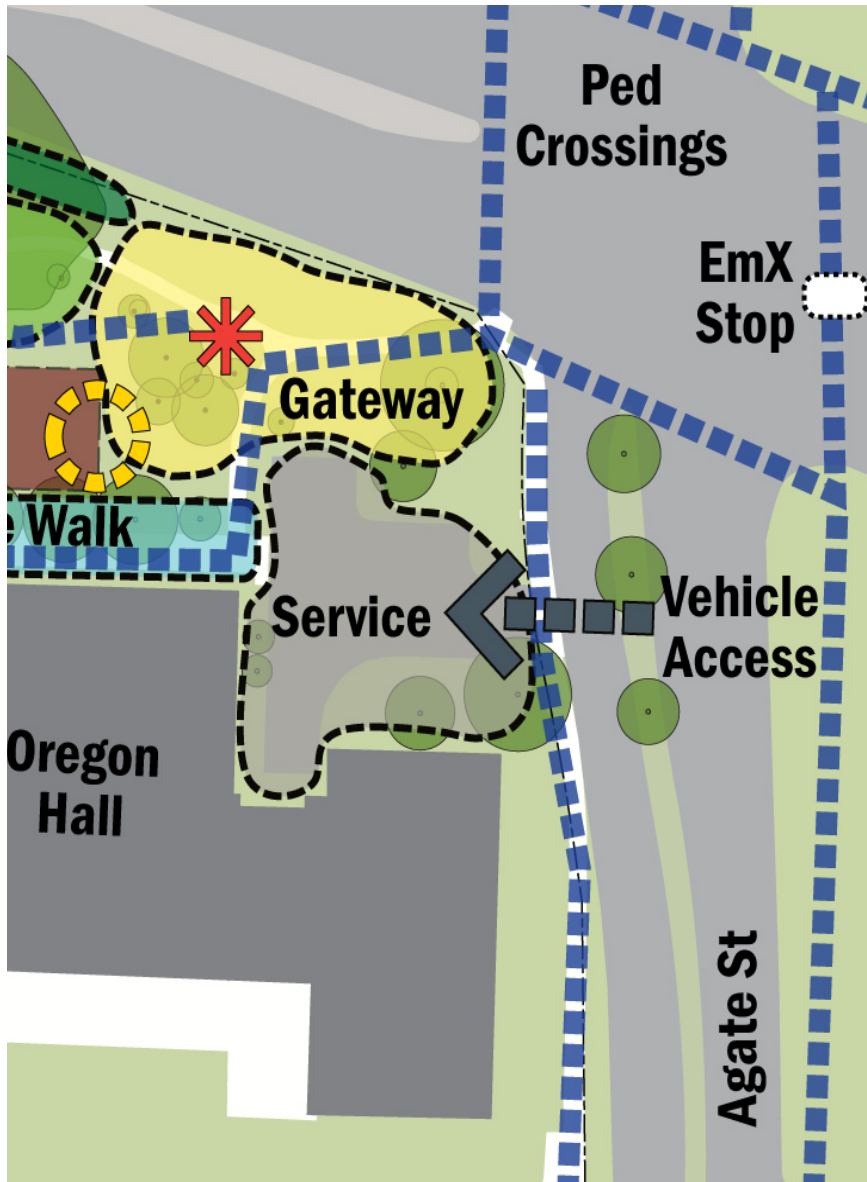


- Provide continuation of Science Walk along new building
- Employ interpretive sustainable landscape and stormwater features and signage
- Enhance linkages to campus pedestrian network, including the gateway area at Franklin & Agate

Science Walk Extension

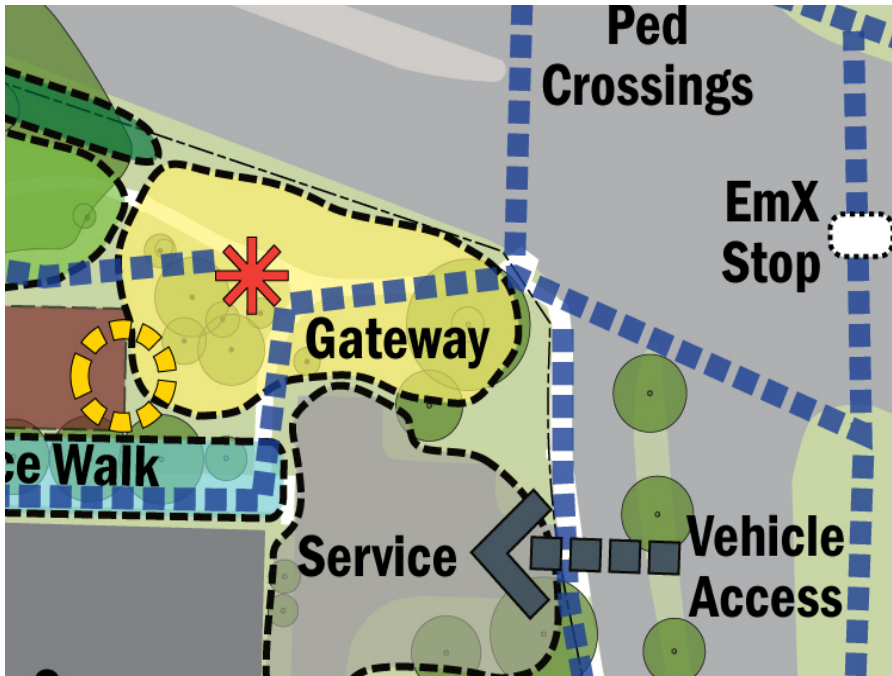


Science Walk Extension



- Retain and improve access for service and emergency vehicles
- Provide additional parking
- Mitigate negative visual impacts on the adjacent gateway area and Franklin/Agate intersection

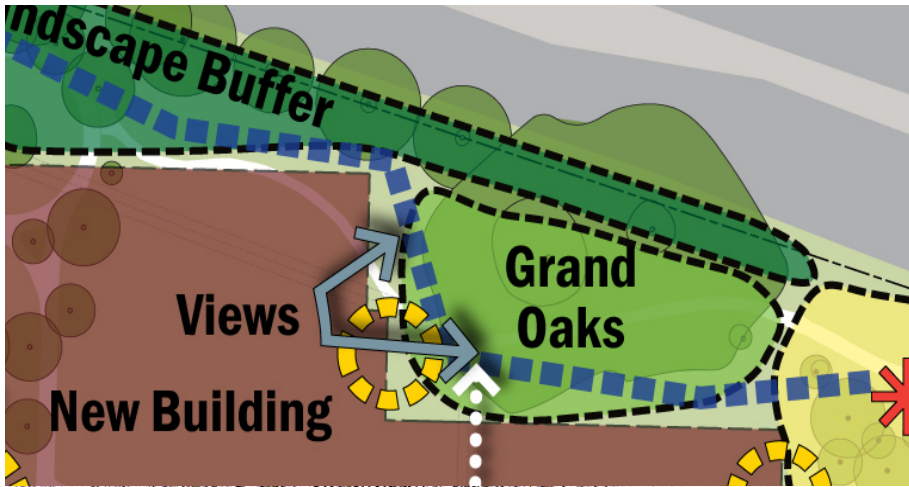
Agate Street Service & Loading Area



- Retain and enhance Agate Street Entrance Green to provide an attractive and welcoming front-door experience
- Retain existing sign
- Improve pedestrian experience and safety
- Integrate turn-lane on Franklin
- Mitigate visual impacts of adjacent service area



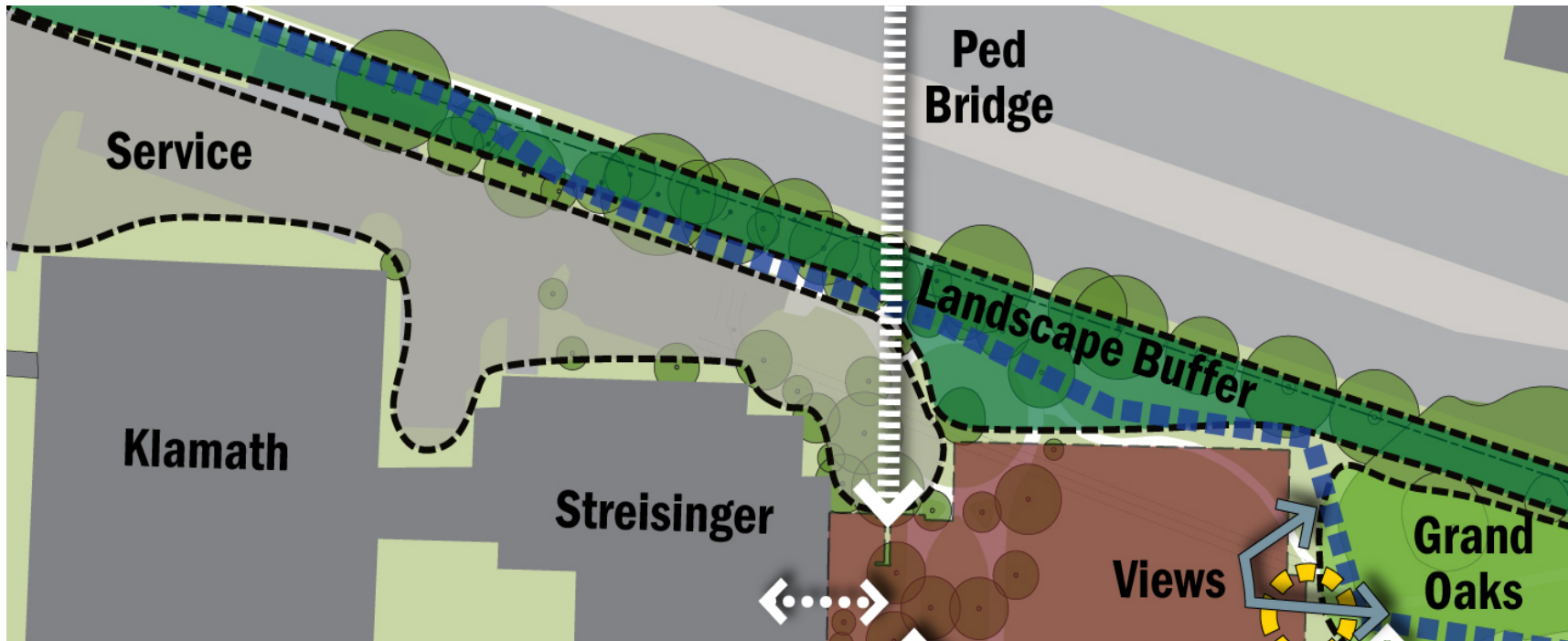
Agate Street Entrance Green



- Preserve and protect the two large oak trees
- Improve the area to provide attractive views from interior common areas in the new building
- Take advantage of natural drainage patterns and incorporate sustainable landscape and stormwater features

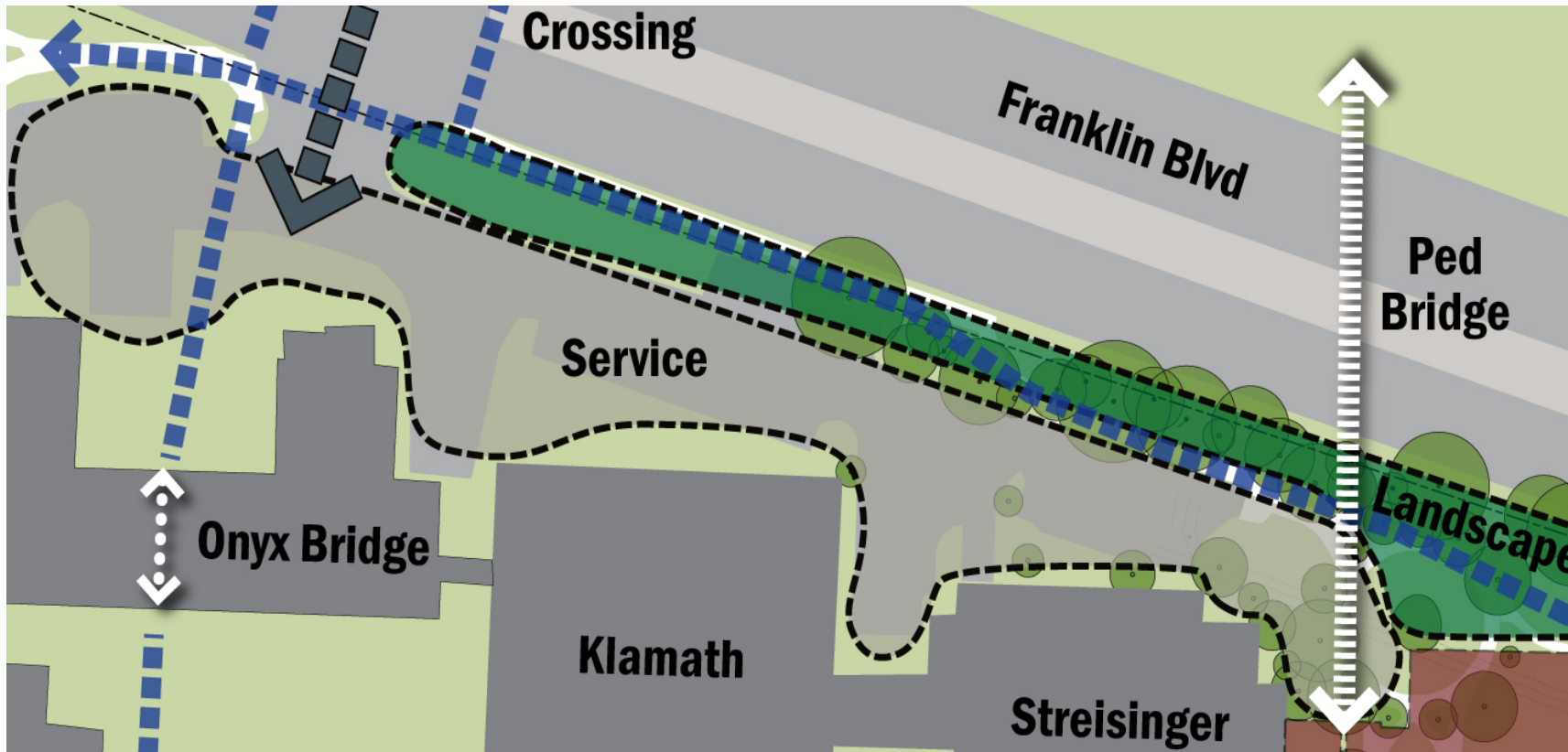


Grand Oaks Area



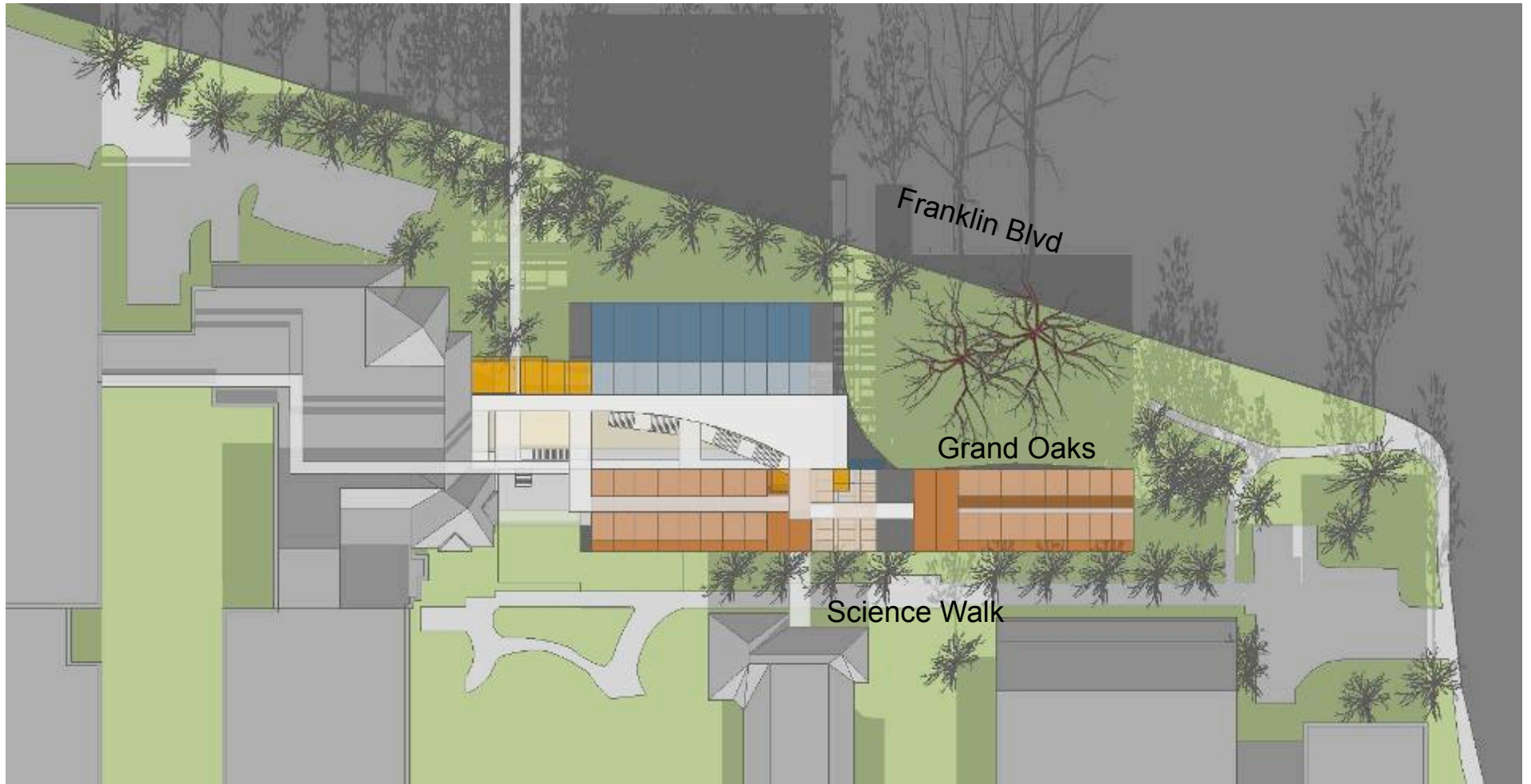
- Provide landscape screen along Franklin Blvd to
 - improve views from and into the campus
 - mitigate traffic noise and air pollution
- Improve safety and appeal of pedestrian circulation along Franklin Blvd

Franklin Boulevard Landscape Buffer



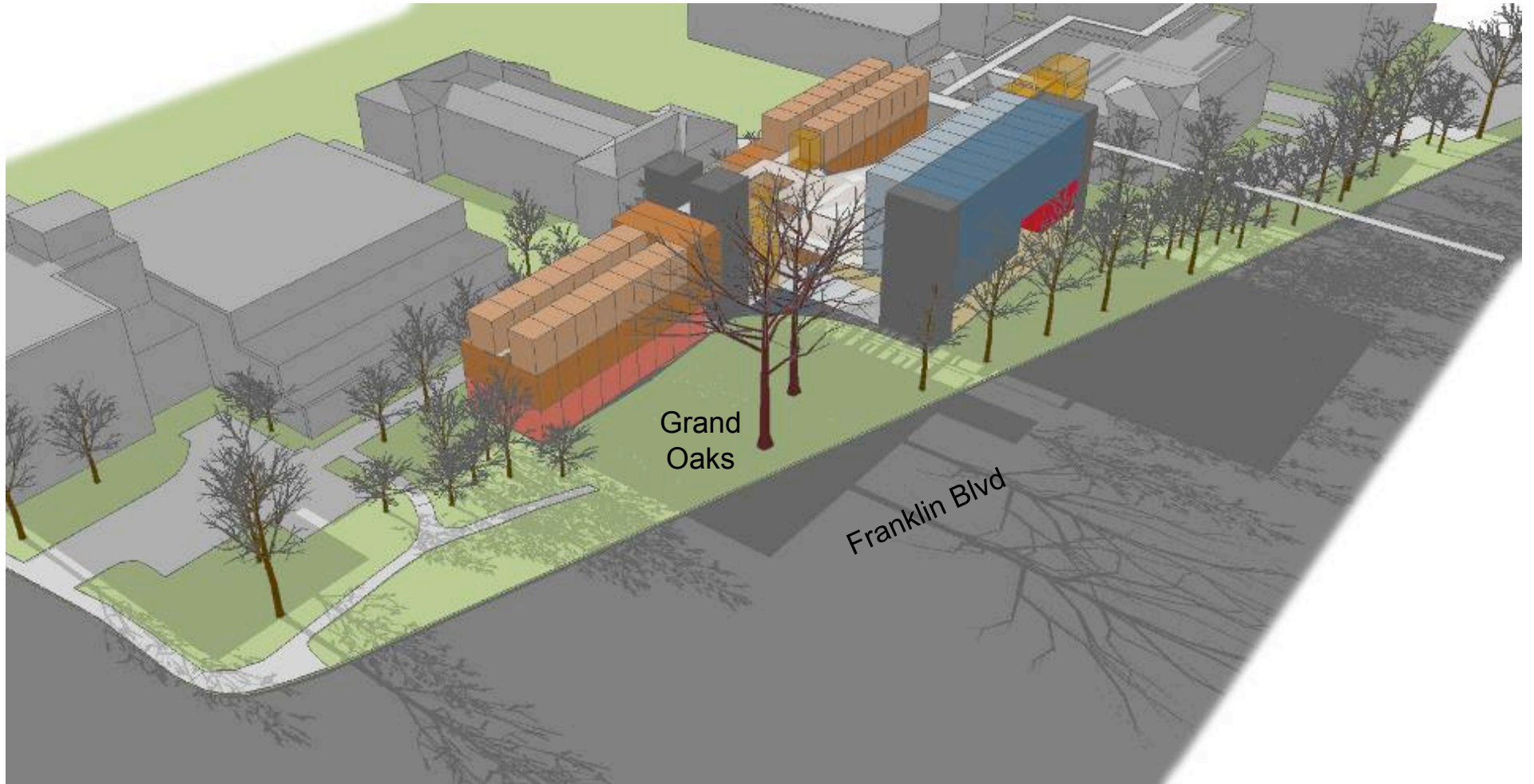
- Extend service and loading access to new building
- Improve screening from Franklin Blvd
- Improve pedestrian circulation along edge

Franklin Boulevard Service Area



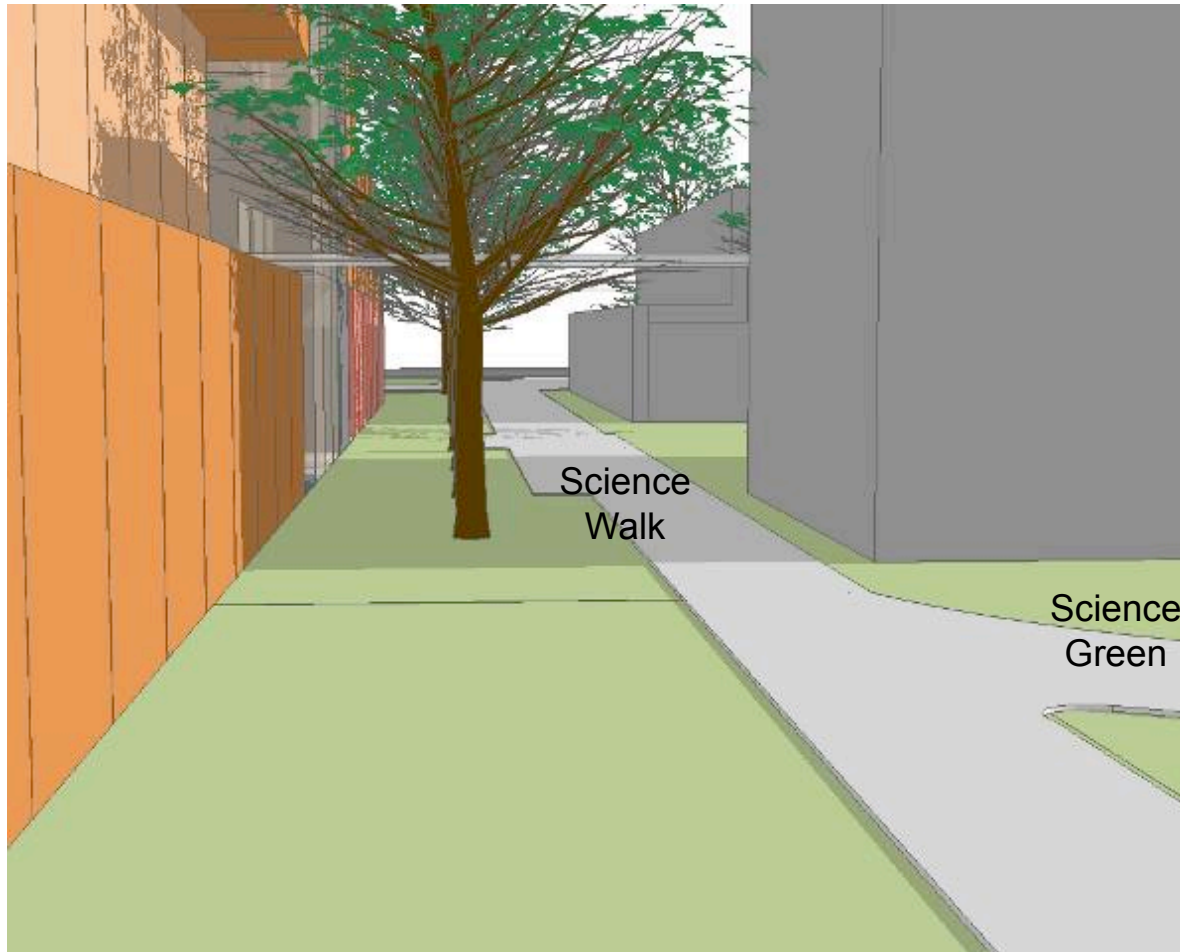
Noon, December 1

Monthly Mid-Day Shading Study – Plan View



Noon, December 1

Monthly Mid-Day Shading Study – Birdseye View



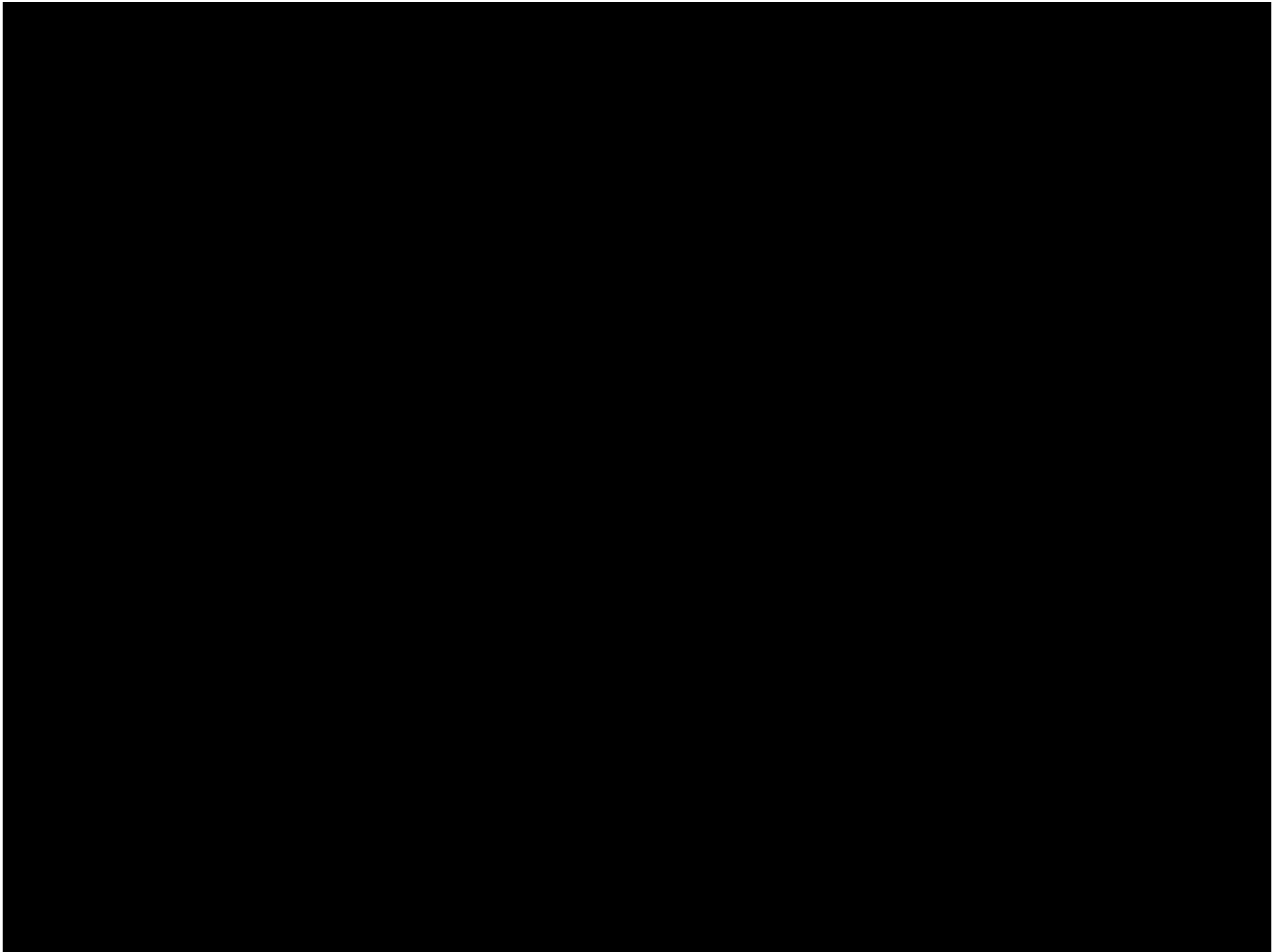
Noon, December 1

Monthly Mid-Day Shading Study – Science Walk



June 21, 08.00 pm

Summer Solstice Shading Study – Grand Oaks

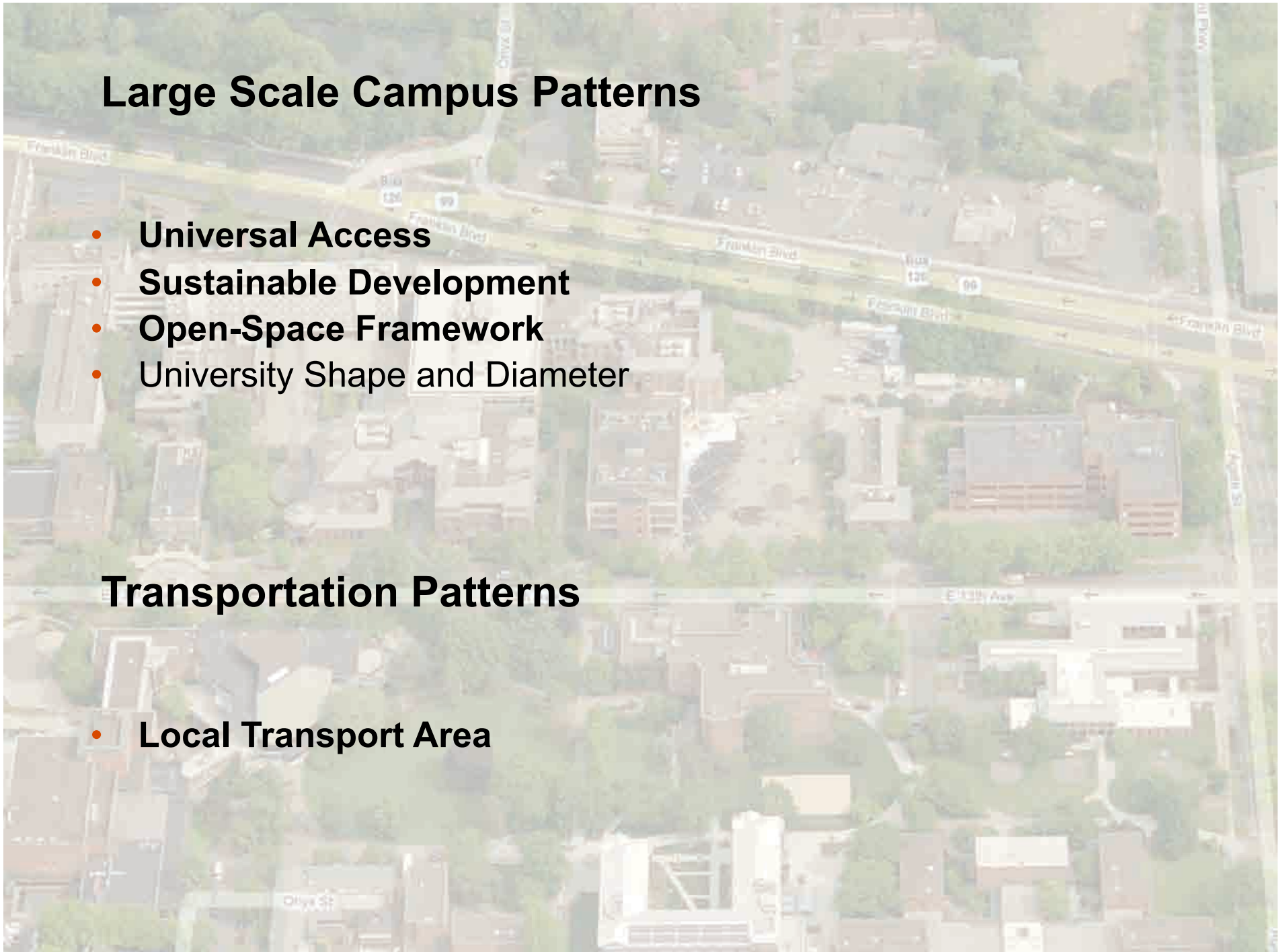


Large Scale Campus Patterns

- **Universal Access**
- **Sustainable Development**
- **Open-Space Framework**
- **University Shape and Diameter**

Transportation Patterns

- **Local Transport Area**

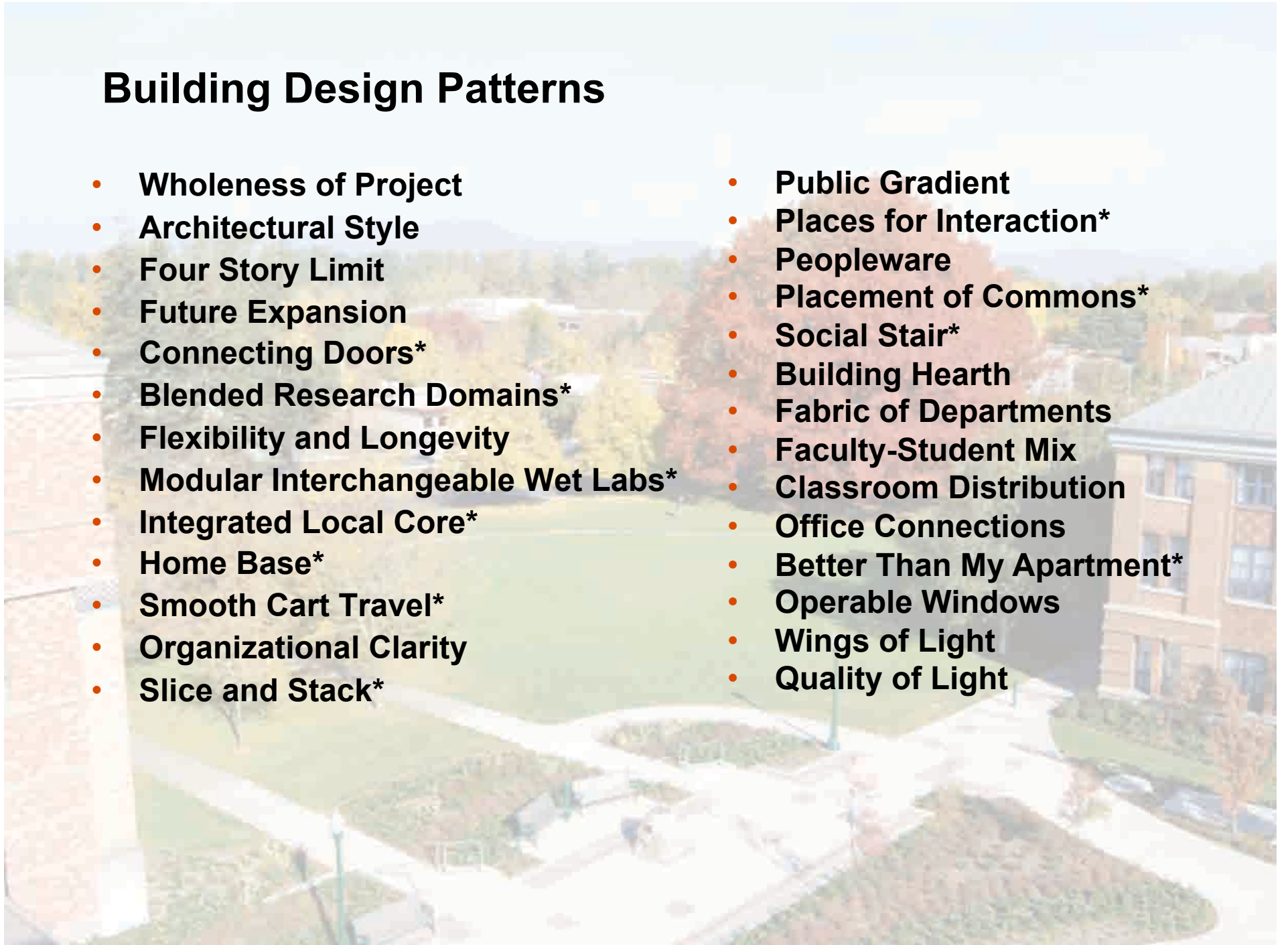


Site Arrangement Patterns

- Positive Outdoor Space
- South Facing Outdoors
- Pedestrian Pathways
- Site Repair
- Tree Places
- Architectural Style
- Building Character and Campus Context
- Research Ties
- Building Complex
- Horizontal Connection – Connected Buildings*
- Family of Entrances
- Main Building Entrance
- Flexibility and Longevity
- Use Wisely What We Have
- Integration
- Existing Uses / Replacement
- Quite Backs
- Wings of Light

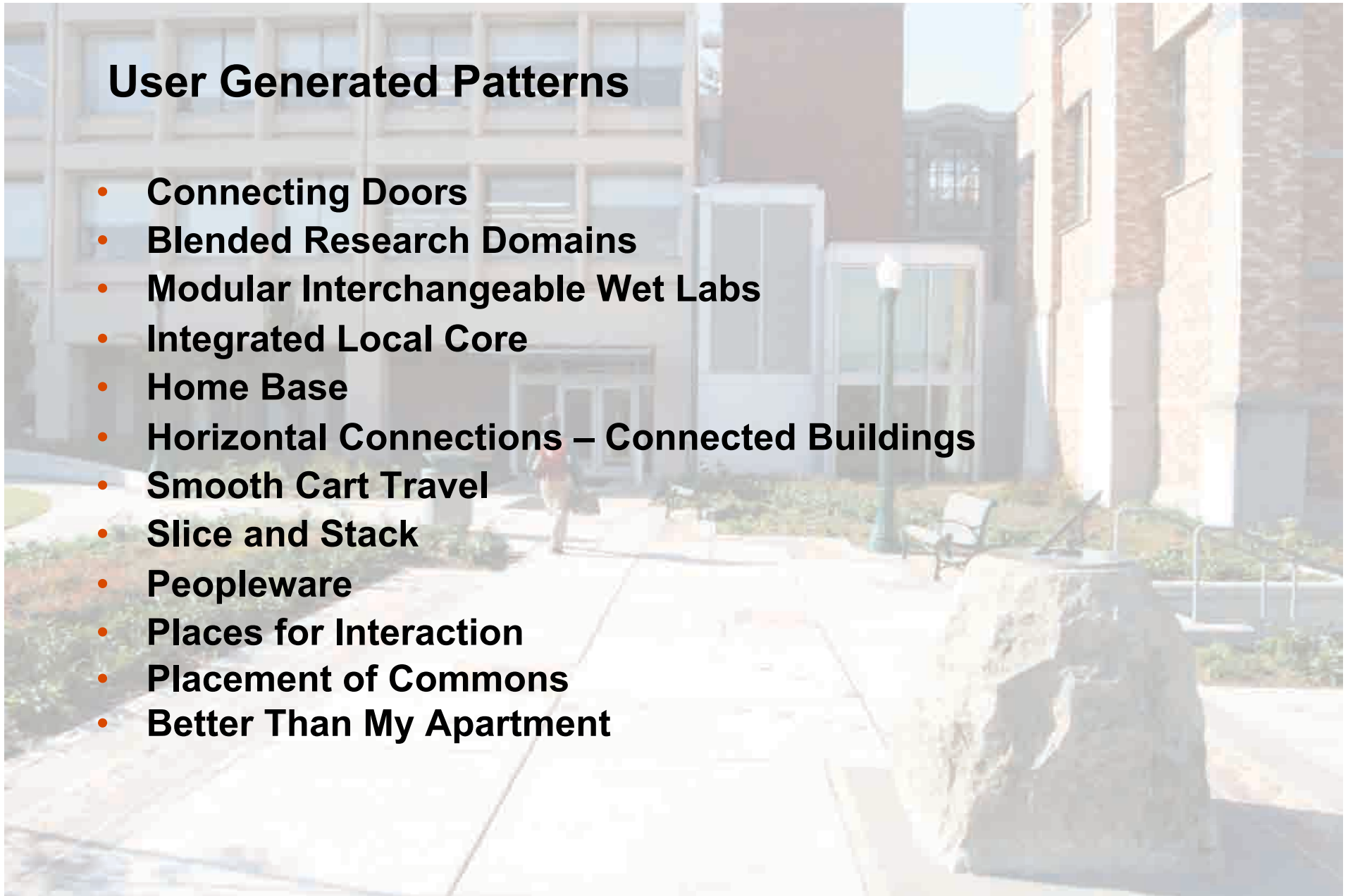
Building Design Patterns

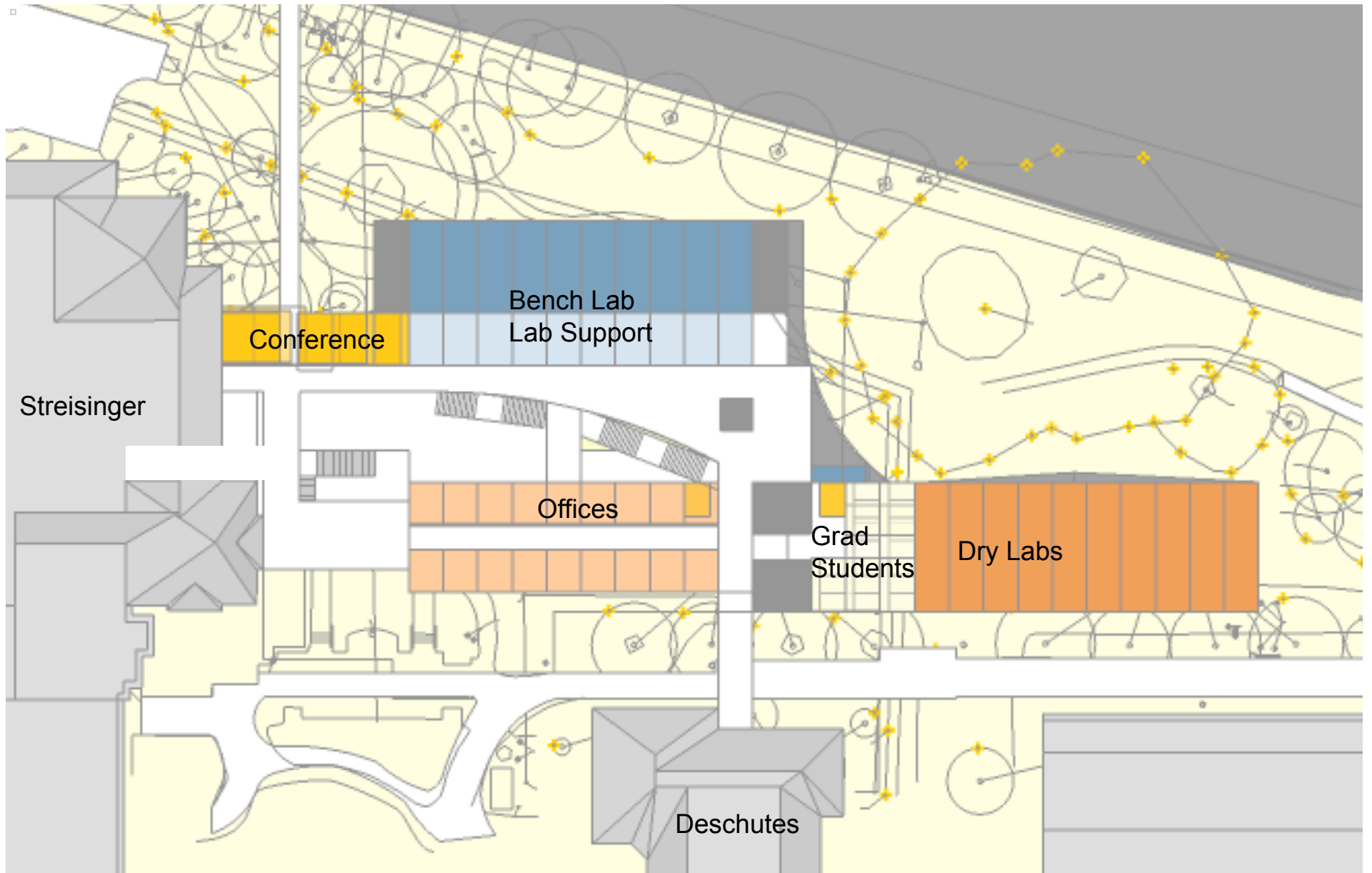
- Wholeness of Project
- Architectural Style
- Four Story Limit
- Future Expansion
- Connecting Doors*
- Blended Research Domains*
- Flexibility and Longevity
- Modular Interchangeable Wet Labs*
- Integrated Local Core*
- Home Base*
- Smooth Cart Travel*
- Organizational Clarity
- Slice and Stack*
- Public Gradient
- Places for Interaction*
- Peopleware
- Placement of Commons*
- Social Stair*
- Building Hearth
- Fabric of Departments
- Faculty-Student Mix
- Classroom Distribution
- Office Connections
- Better Than My Apartment*
- Operable Windows
- Wings of Light
- Quality of Light



User Generated Patterns

- **Connecting Doors**
- **Blended Research Domains**
- **Modular Interchangeable Wet Labs**
- **Integrated Local Core**
- **Home Base**
- **Horizontal Connections – Connected Buildings**
- **Smooth Cart Travel**
- **Slice and Stack**
- **Peopleware**
- **Places for Interaction**
- **Placement of Commons**
- **Better Than My Apartment**





Option A "Offices West"

Plan

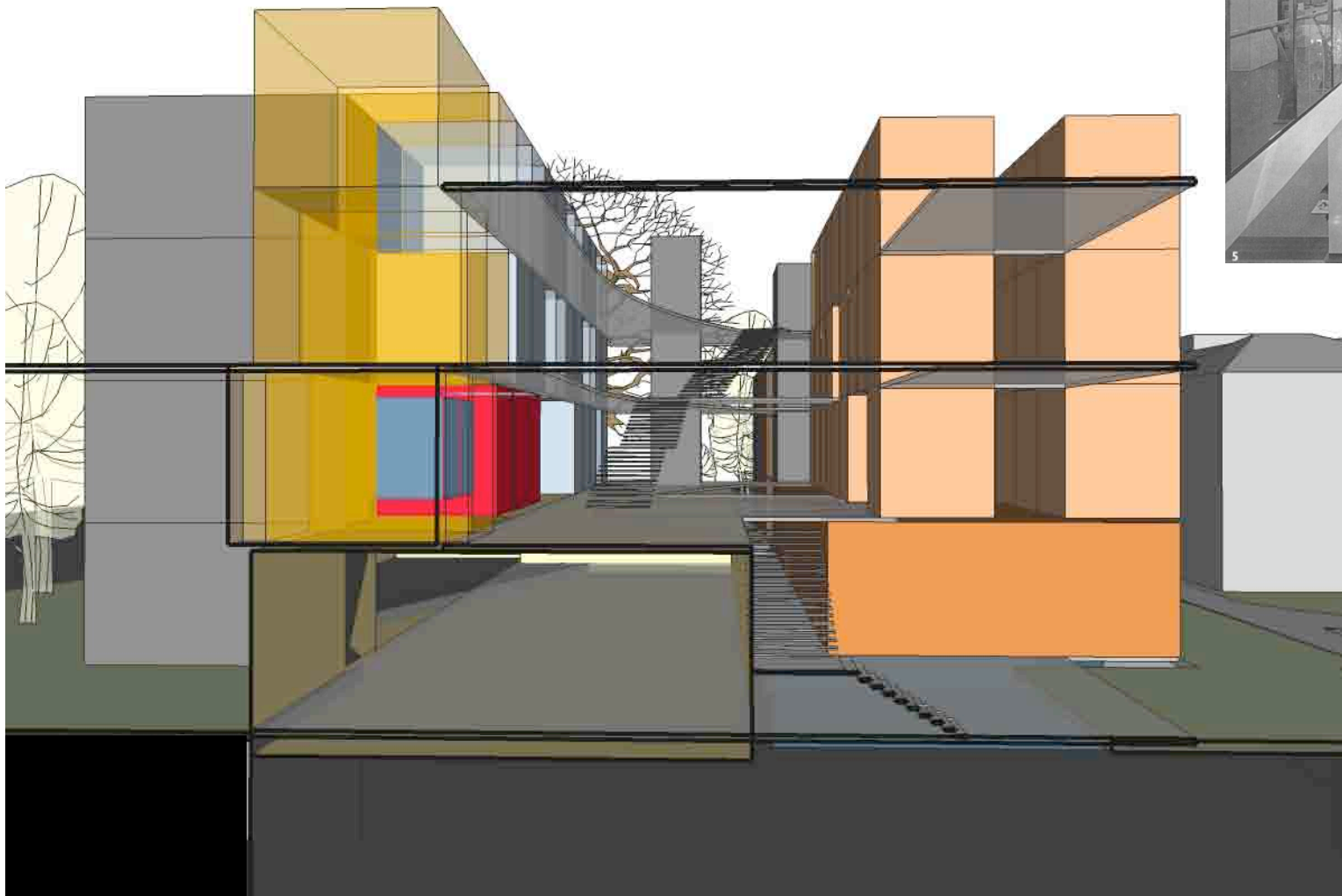
Option A "Offices West"



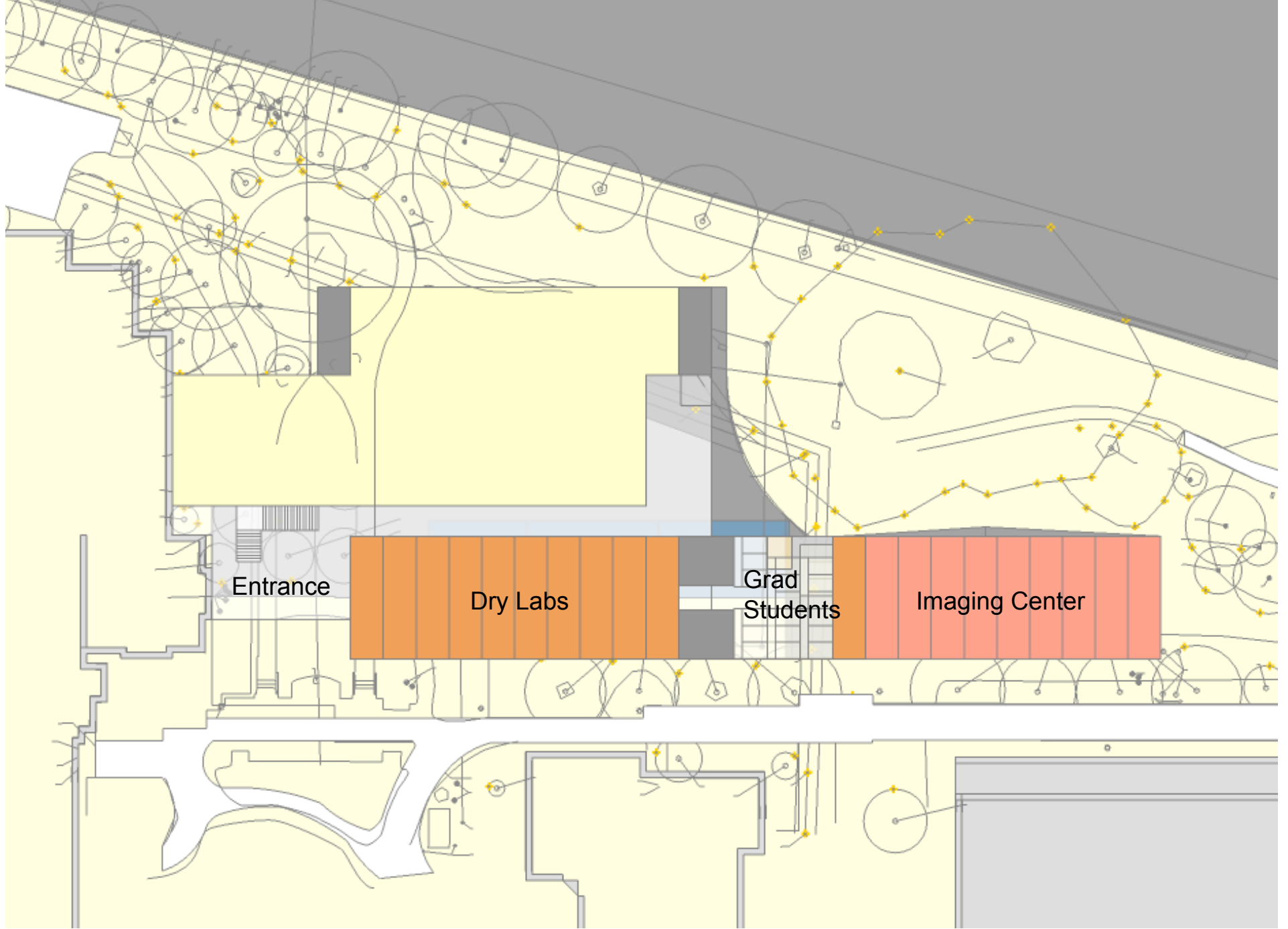
Option A "Offices West"



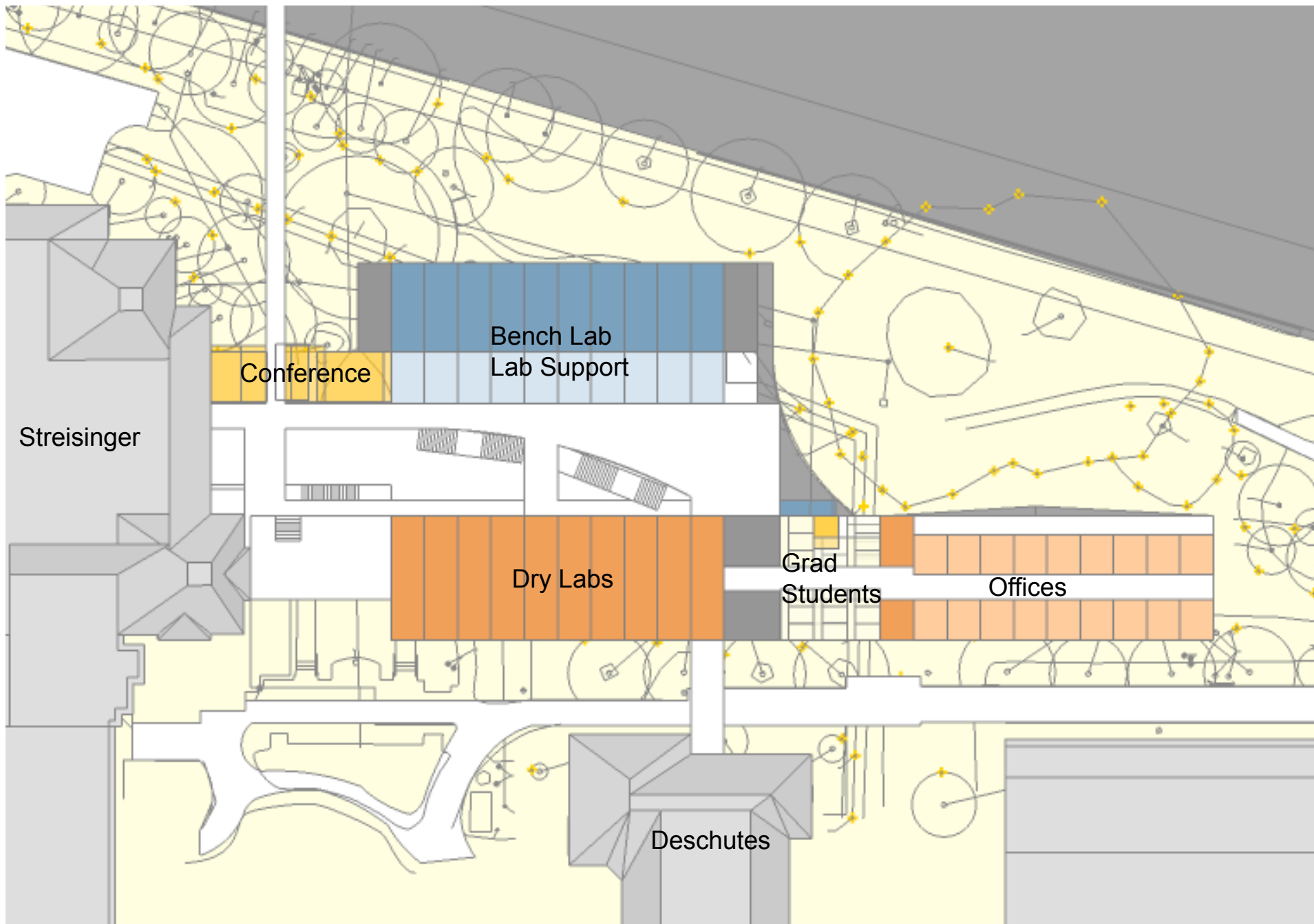
Option A "Offices West"



Section



All Options Ground Floor Plan



Option B "Dry Labs West"

Plan

Option B “Dry Labs West”

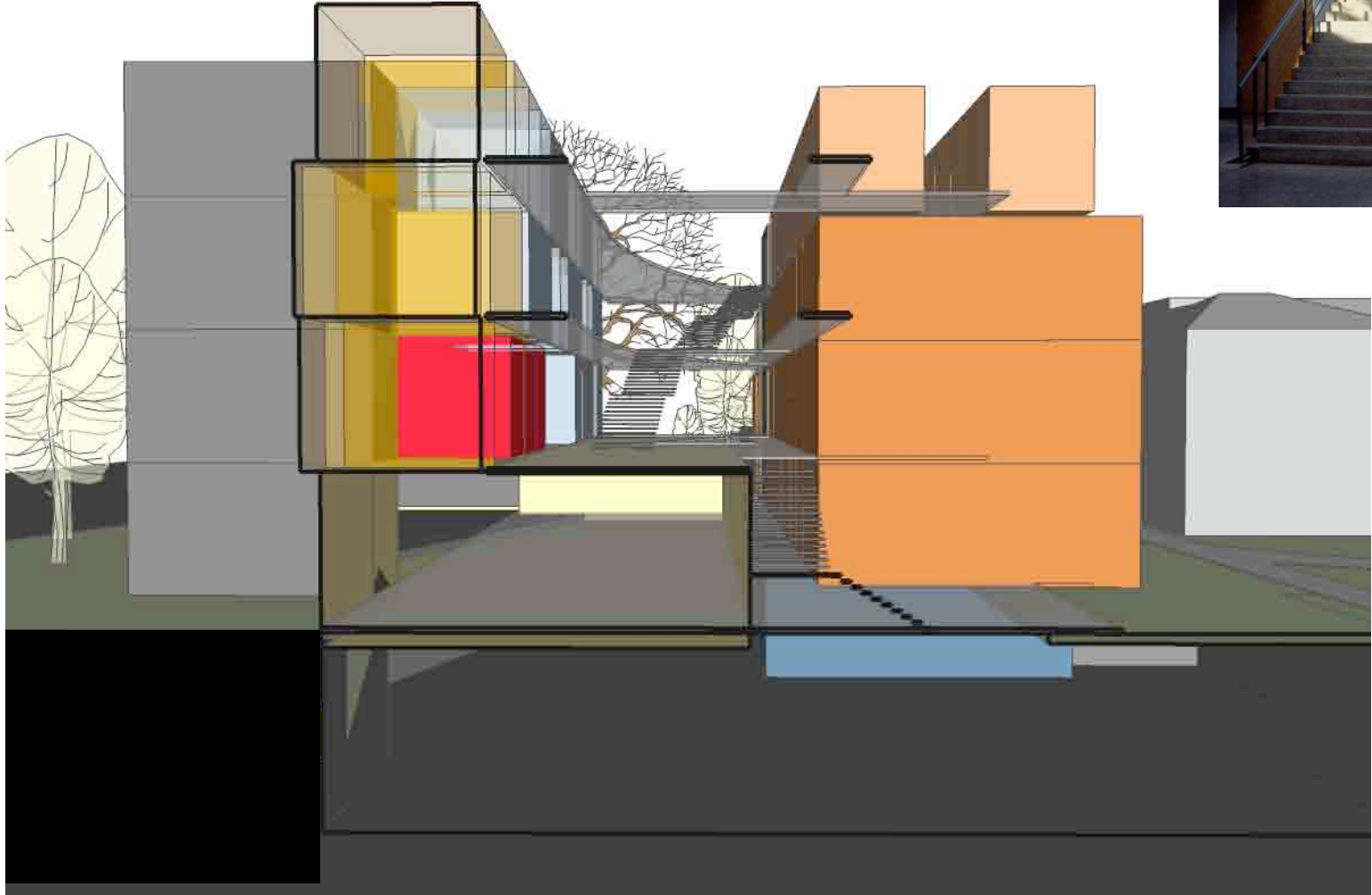


Option B “Dry Labs West”

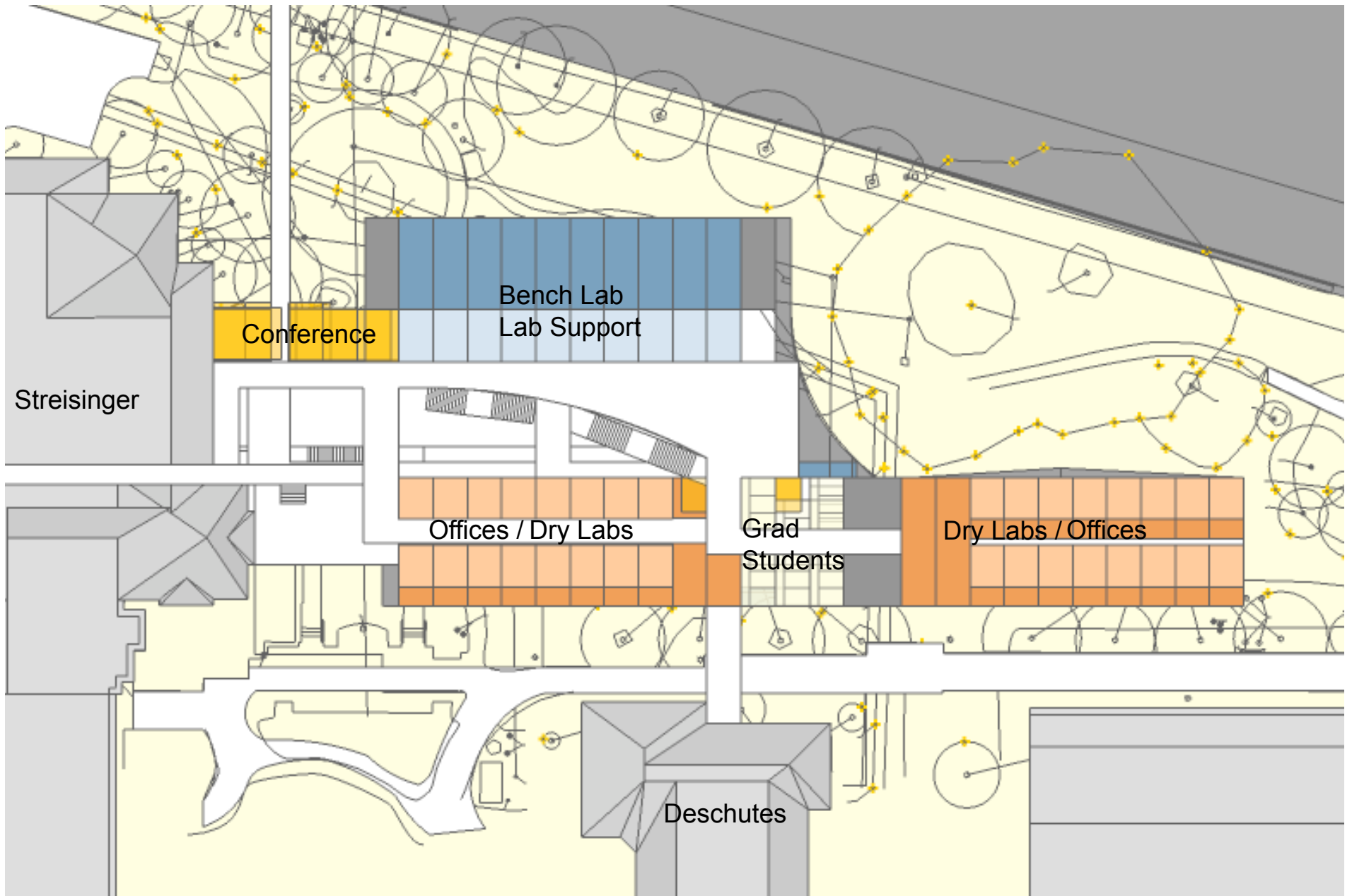


□

Option B "Dry Labs West"



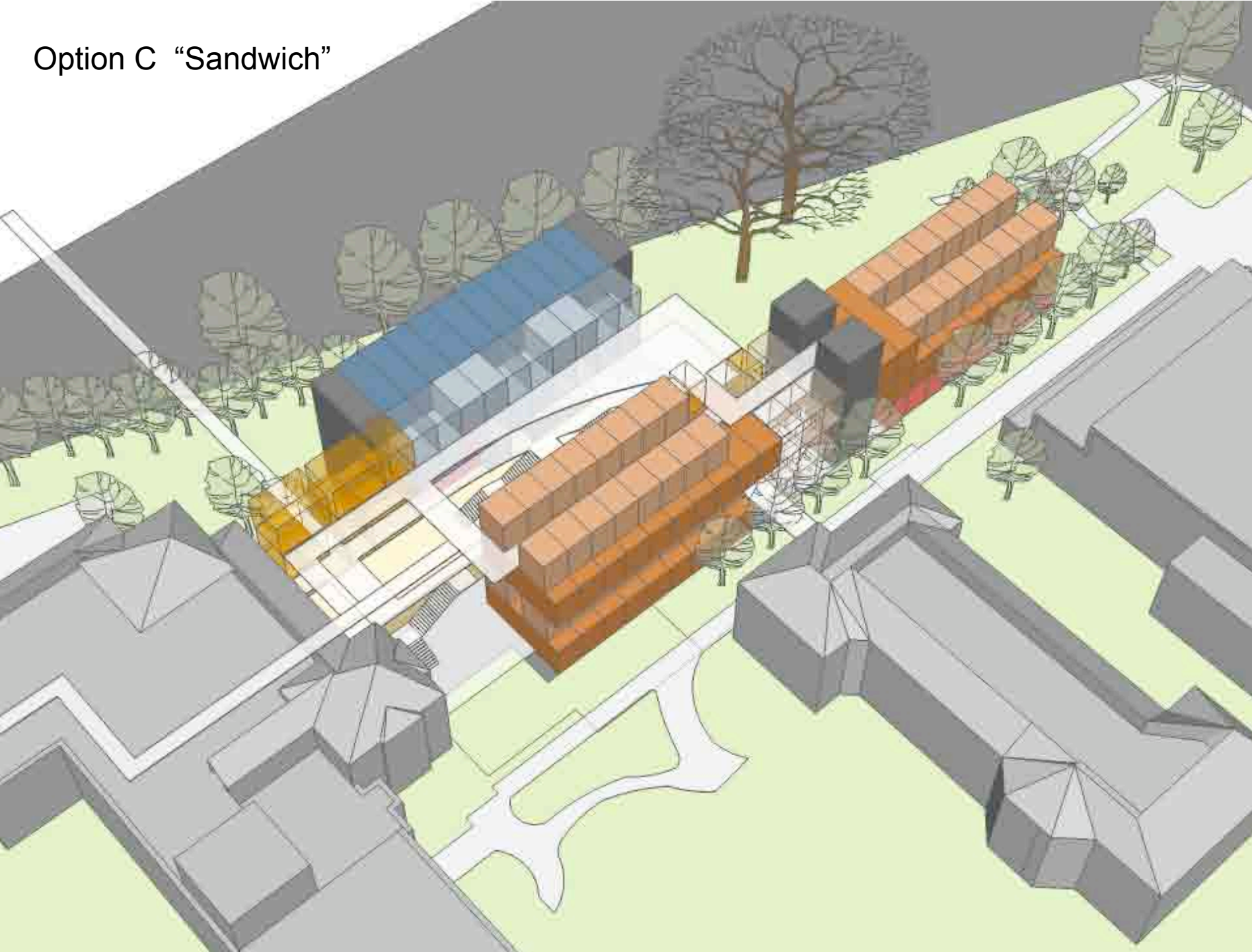
Section



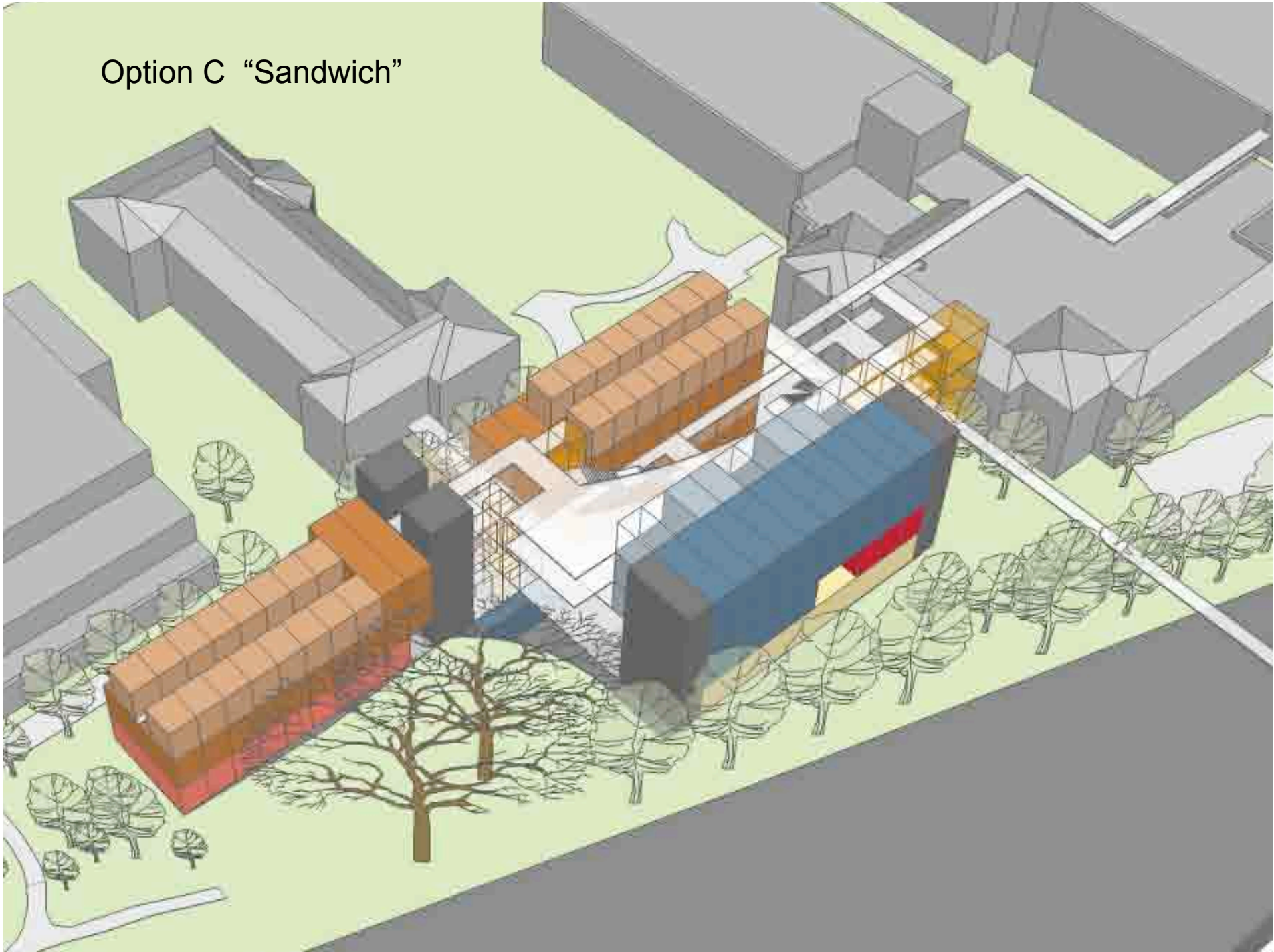
Option C "Sandwich"

Plan

Option C "Sandwich"



Option C "Sandwich"



Option C "Sandwich"



Section

